



AIR TOOL ACCESSORIES

A HORNGROUP BRAND



OPERATIONAL EXCELLENCE DRIVEN BY A CUSTOMER-CENTRIC APPROACH

Throughout the global challenges of recent years, PCL has continued to innovate and support partners and customers with world-class products and service.

PCL has recently invested £0.5 million into lean manufacturing and new product development, with a factory restructure aimed at driving forward efficiency, flexibility, enhancing performance and safety. Changes across the board have created a more agile operation that is reactive to customer demands, with ongoing investments into new machinery and products.

Global network, first-class local support

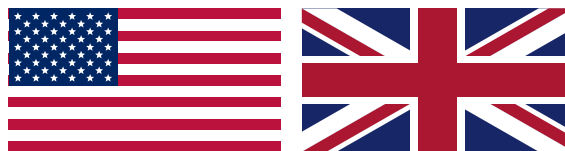
PCL is renowned for its customer-centric approach and a worldwide network of skilled partners providing a dedicated aftersales service and technical support on the customer's doorstep. This pro-active partnering has established PCL as the brand to buy in over 100 countries.

Partner+ for extended product range and enhanced support

For customers looking for a broader range of products, PCL's Partner+ distributors typically offer bigger inventories and more extensive technical competencies. PCL works closely with these industry experts to provide enhanced product training, collaborative marketing initiatives and on-site demonstrations.

Exceeding customer expectations

PCL is committed to developing quicker, more responsive and competitive ways to progress from initial idea to market. We strive to meet and exceed customer expectations, improve delivery and performance and maintain the high quality of the PCL brand.





PCL is dedicated to helping its customers develop and prosper through a range of features and benefits.

Comprehensive package

PCL is continually developing its advanced and extensive portfolio of tire inflation and compressed air equipment to fit any industry need, with bespoke products to meet the demands of local markets.

Built to last

All PCL products are manufactured from the highest quality material with reliability and durability in mind, and thoroughly tested to all (applicable) internationally recognised standards.

Performance

PCL's products out-perform all other comparative brands, with a focus on quality and efficiency resulting in increased production and profit for the customer's business.

Trusted warranties

All products carry a 1 year warranty, and now 2 years on PCL's market-leading AIRFORCE® MK4.

Local service, worldwide

A pro-active approach to partnering and pioneering design enables PCL to supply standard and bespoke products, backed up by local customer service and training.

Experience

PCL's unrivalled knowledge and proven track record of manufacturing excellence means customers have access to the best technical expertise and products available.

Technical support

PCL's highly trained experts are on hand to provide customers with full technical assistance, including site visits where necessary.

Dedication to customers

PCL provides a full after sales service, including training and support to sell products, such as bespoke literature and product user manuals.

Why PCL?

PCL has firmly established itself as the international market leader through innovative design and a proactive approach, providing the best products and customer service available...

...for all your pneumatic needs.



FIXED TIRE INFLATOR

ACCURA QUBE SERIES II TIRE INFLATOR

BEST SELLER

PCL's new plug and play ACCURA QUBE Series II is built for simplicity and versatility to save time and money. Combining the latest electronics and touch button technology in a user-friendly, space-saving design, it provides fast, safe and accurate Air and N2 inflation.

The latest QUBE is even more robust and offers higher levels of speed and accuracy, with new "human-touch" recognition software added to the buttons. An additional 4 preset button module allows common pressures to be set quickly, speeding up straight-forward processes in workshops, garages and factories. All the customer needs to do is pre-set the required pressure, place the connector on the tire, and let the inbuilt auto-start function do the rest.

Features

- Simple and easy to use with touch screen technology
- Plug and Play; Saves time and money in workshop operations
- New 4 button option increases savings in operations even further
- OPS and Nitrogen (N2) purge modes
- Individually tested and certificated to meet accuracy BS EN12645:2014



Part Number	Description	Hose Length	Tire Valve Connection
QUBE0	230v (No plug)	5 m / 16 ft	Euro clip-on
QUBE0/4P	230v (No plug) with 4 preset buttons	5 m / 16 ft	Euro clip-on
QUBE0B	230v (No plug). Bluetooth enabled	5 m / 16 ft	Euro clip-on
QUBE4	120v (US plug)	5 m / 16 ft	Euro clip-on
QUBE4P	120v (US plug) Blue Lid with 4 preset buttons	5 m / 16 ft	Euro clip-on
QUBE4B	230v (US plug). Bluetooth enabled	5 m / 16 ft	Euro clip-on
QUBE6	12v (No plug)	N/A	N/A
STND-SVL	Swivel Stand	N/A	N/A
CUSTOM	Ask your PCL rep for all models and configurations		

- Accuracy: +/- 0.5% FS (Complies to BS EN12645:2014)
- Maximum inflation pressure: 174 psi / 12 bar
- Resolution: 0.1 bar / 1 psi / 5 kPa / 0.1 kgf/cm²



Part Number	Description	Hose Length	Tire Valve Connection
QUBE44X25	110V (US plug) complete 4 hose kit with (4) 25' coil hoses	7.6m / 25 ft	Euro clip-on
QUBE44X25SH	110V (US plug) complete 4 hose kit with (4) 25' straight hoses	7.6m / 25 ft	Euro clip-on

- Accuracy: +/- 0.5% FS (Complies to BS EN12645:2014)
- Maximum inflation pressure: 174 psi / 12 bar
- Resolution: 0.1 bar / 1 psi / 5 kPa / 0.1 kgf/cm²



FIXED TIRE INFLATOR

ACCURA QUBE SERIES II TIRE INFLATOR

BEST SELLER

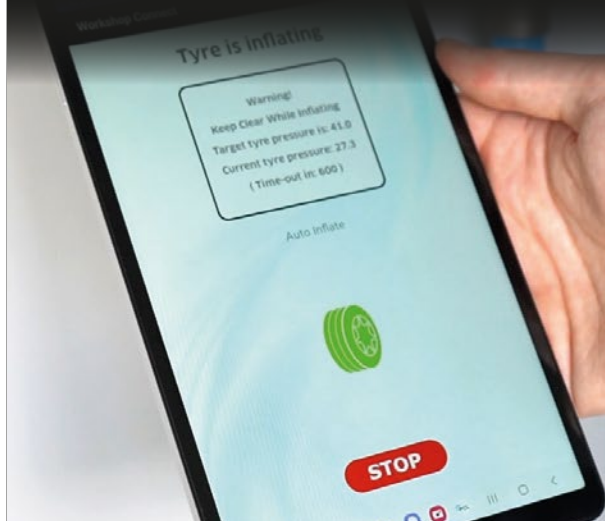
ALSO AVAILABLE

 **Bluetooth® enabled**

ACCURA QUBE TIRE INFLATOR

Connect via the free **PCL WORKSHOP CONNECT** app
to allow remote inflation and data reporting.

- Operators can distance themselves from the tire during standard inflation with 100% control via free Workshop Connect App
- Data reports - robust technician audit trail and logging of vital data to provide safety and peace of mind for operators and consumers alike
- Ideal for garages, tireshops, dealerships, fleets, roadside assistance vehicles, MOT centres and automotive production lines





AUTOMATIC TIRE INFLATOR

ACCURA D10 STANDARD RANGE

This is the die-cast pre-set tire inflator for forecourts, workshops and garages where fast, safe, secure and time-saving inflation is key. Combining the latest electronic inflation technology with user-friendly controls, the D10 allows the operator to pre-set the required pressure and get on with other tasks while the inflator does the rest, thereby increasing workshop efficiency. The D10 also reduces operational expenses and long-term equipment costs, and actively boosts safety - which is of vital importance to modern regulations.



ALSO AVAILABLE » AIRCRAFT HIGH PRESSURE VERSION



Features

- Auto-start inflation
- Audible and visual end of cycle signal
- Default to safe setting
- Custom options available inc. dual screen
- Aluminium die-cast housing and strong quality image and branding
- Complies with EC Directive BS EN12645:2014

Part Number Description

D10SS20T/0004	Wall mounted
D20SS20T/0004	Pedestal mounted
D25SS20T/0004	Pedestal mounted air & water
CUSTOM	Ask your PCL rep for all models and configurations

- Accuracy: +/- 0.5% FS (Complies to BS EN12645:2014)
- Maximum inflation pressure: 10 bar / 145 psi / 999 kPa / 10 kgf/cm²
- Resolution: 0.1 bar / 1 psi/ 5 kPa / 0.1 kgf/cm²



ACCURA D12 & D13 TIRE SHOP INFLATOR

PCL's die-cast ACCURA range includes the D12 and D13 tire inflators. Featuring advanced, user-friendly design, touch screen and leading sensor technology, they incorporate tire shop specific software with a default to last setting, over pressure mode and N2 purging.

The D12 provides increased cost savings for professional tire applications - including commercial and retail tire shops, mobile tire fleets, automotive OEMs, garages, car dealers and transport depots - and enhanced safety, which is of vital importance in light of today's strict regulations. The D13 builds on the standard D12, with multi-tire capabilities.

Features

- Bead seat over pressure facility (OPS)
- Fast inflation times
- Nitrogen (N2) purge
- Auto-start inflation
- Custom capabilities to tailor to specialist requirements
- Complies with BS EN 12645:2014

Part Number Description

D12SS50C/0004	Wall mounted
D13SS50C/0004	Wall mounted multi-hose variant
CUSTOM	Ask your PCL rep for all models and configurations

- Accuracy: +/- 0.5% FS (Complies to BS EN12645:2014)
- Maximum inflation pressure: 10 bar / 145 psi / 999 kPa / 10 kgf/cm²
- Resolution: 0.1 bar / 1 psi/ 5 kPa / 0.1 kgf/cm²





MID AND HIGH PRESSURE INFLATION

ACCURA D12 MID-PRESSURE INFLATOR

Features

- Audible and visual end of cycle signal
- Default to safe setting
- Custom options available
- Aluminium die-cast housing and strong quality image and branding
- Complies with BS EN12645:2014

Part Number Description

D12SS70C/0004 D12, Wall Mounted, 16Bar, 120v

CUSTOM Ask your PCL rep for all models and configurations

- Accuracy: +/- 0.5% FS (Complies to BS EN12645:2014)
- Maximum inflation pressure: 16 bar / 232 psi / 1600 kPa / 16 kgf/cm²
- Resolution: 0.1 bar / 1 psi / 5 kPa / 0.1 kgf/cm²

PRESSURE UP TO » 232 PSI (16 BAR)



ACCURA D10 AVIATION INFLATOR

Features

- Audible and visual end of cycle signal
- Default to safe setting
- Custom options available inc. dual screen
- Aluminium die-cast housing and strong quality image and branding
- Complies with BS EN12645:2014

Part Number Description

D10SS80C/0004 Aviation Model, 22Bar, psi/bar, 120v

D10DS80C/0004 Aviation Model, Dual Screen 22Bar psi/bar

CUSTOM Ask your PCL rep for all models and configurations

- Accuracy: +/- 0.5% FS (Complies to BS EN12645:2014)
- Maximum inflation pressure: 22 bar / 320 psi / 2200 kPa / 22 kgf/cm²
- Resolution: 0.1 bar / 1 psi / 5 kPa / 0.1 kgf/cm²

PRESSURE UP TO » 320 PSI (22 BAR)



Explore the full range on the PCL website



AUTOMATIC INFLATORS

SLIMLINE CABINETS

The latest Air and Air & Water range of cabinets are designed to meet the exacting and testing demands of auto service centers and fleet depots. The stainless steel and/or painted cabinets have the ability to resist harsh environments while keeping the unit looking clean. Both the Slimline Air Cabinets and Slimline Air & Water Cabinets have the ability to incorporate compressors inside the units, allowing them to function whether main air is available or not.

SLIMLINE AIR CABINET

Features

- Easy to operate for the driver
- Alternative tire valve connectors available for all units
- In-built compressor options
- A range of payment methods, cashless, coin and token

Part Number	Description
D90SS10T/0004	Slimline cabinet, coiled 33' air hose w/ hold-on connector, air only, no compressor
D92SS10T/0004	Slimline cabinet, coiled 33' air hose w/ hold-on connector, 80 psi compressor
CUSTOM	Ask your PCL rep for all models and configurations
- Compliance: BS EN 12645:2014 - Reading Accuracy: 1 psi - Max. Supply Pressure: 232 psi - Inflation Flow: 14 cfm - Inflation Range: 0 - 145 psi - Operating Temperature: -4°F to 158°F - IP Rating: Cabinet: IP44 / Electronic inflator: IP66	



SLIMLINE AIR & WATER CABINET

Features

- Low life-cycle costs, suitable where main air is not available
- Alternative tire valve connectors available for all units
- In-built compressor options
- A range of payment methods, cashless, coin and token

Part Number	Description
D91SS10T/0004	Slimline cabinet, coiled 33' air hose w/ hold-on connector & water hose, no compressor
D93SS10T/0004	Slimline cabinet, coiled 33' air hose w/ hold-on connector & water hose, 80 psi compressor
CUSTOM	Ask your PCL rep for all models and configurations
- Compliance: BS EN 12645:2014 - Reading Accuracy: 1 psi - Max. Supply Pressure: 232 psi - Inflation Flow: 14 cfm - Inflation Range: 0 - 145 psi - Operating Temperature: -4°F to 158°F - IP Rating: Cabinet: IP44 / Electronic inflator: IP66	



Inquire with your PCL rep for all cabinet options including corporate branding



AUTOMATIC INFLATORS

STANDARD CABINETS

PCL'S line of Standard Air and Standard Air & Water Cabinets provide an attractive and stylish appearance while meeting the demands of auto service centers. All components of these systems are built for ease of use, reliability, and extended life.

STANDARD AIR CABINET

Features

- High performance retractable hose reels as standard
- Alternative tire valve connectors available for all units
- In-built compressor options
- A range of payment methods, cashless, coin and token

Part Number	Description
D95SS10T/0004	Standard cabinet, 25' air hose reel w/ hold-on connector, air only, no compressor
D97ST10T/0004	Standard cabinet, 25' air hose reel w/ hold-on connector, 80 psi compressor
CUSTOM	Ask your PCL rep for all models and configurations
- Compliance: BS EN 12645:2014 - Reading Accuracy: 1 psi - Max. Supply Pressure: 232 psi - Inflation Flow: 14 cfm - Inflation Range: 0 - 145 psi - Operating Temperature: -4°F to 158°F - IP Rating: Cabinet: IP44 / Electronic inflator: IP66	



STANDARD AIR & WATER CABINET

Features

- High performance retractable hose reels as standard
- Alternative tire valve connectors available for all units
- In-built compressor options
- A range of payment methods, cashless, coin and token

Part Number	Description
D96SS10T/0004	Standard cabinet, 25' air hose reel w/ hold-on connector, 12' water hose reel, no compressor
D98SS10T/0004	Standard cabinet, 25' air hose w/ hold-on connector, 12' water hose reel, 80 psi compressor
CUSTOM	Ask your PCL rep for all models and configurations
- Compliance: BS EN 12645:2014 - Reading Accuracy: 1 psi - Max. Supply Pressure: 232 psi - Inflation Flow: 14 cfm - Inflation Range: 0 - 145 psi - Operating Temperature: -4°F to 158°F - IP Rating: Cabinet: IP44 / Electronic inflator: IP66	



Inquire with your PCL rep for all cabinet options including corporate branding



STANDARD DIGITAL OEM INFLATION BOX

As an experienced designer and manufacturer of forecourt tire inflation solutions, PCL can build bespoke OEM inflation 'kits' where customers have their own cabinets/housings but want a reliable and highly accurate software system.

Features

- Hardened plastic housing with pre-drilled mounting holes for easy fixing
- IP66 rated for indoor or outdoor use
- New electronic capacitive touch buttons
- 30 mm LCD transfective display screen for easy reading day or night

Software Options Include (But not limited to)

- Modem installation for remote system monitoring
- Internet/e-mail GPRS data interrogation
- Coin mechanism/counter remotely monitored via a modem and GPRS
- Data capture and logging
- Multi vend system (Air / Vac / Fragrance / Screenwash)
- Parameter and special inflation adjustments to meet bespoke applications
- Bespoke inflation systems with PC integration
- Data transfer to remote printout
- Graphical/user interface via VGA and touch-screen displays
- Forecourt Nitrogen purge facility integration



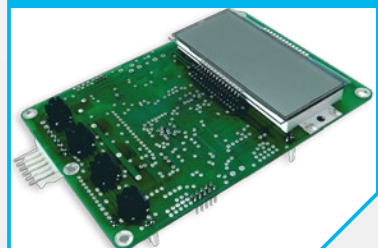
Easy to read in all light
30mm LCD



High quality Swiss made
sensor



PCB designed in Sheffield



Part Number	Description
D60	Standard Digital OEM Inflation Box



ALSO AVAILABLE FROM PCL

THE FREE SPIRIT RANGE

Enhance your outdoor leisure facilities with PCL's ground-breaking, low maintenance inflation stations. Joining the existing Sports Ball Inflation Station, the range now includes the Digital Bicycle Inflation & Repair Station, and the UK's first ever SUP (Stand Up Paddleboarding) Inflation Station, launched in partnership with leading SUP brand Red Paddle Co.



- **Easy to use**
Simply place the connector onto the valve, set the desired pressure and the unit does the hard work of inflating the sports equipment
- **Revenue generation**
Available with card payment facilities for revenue generation - average payback within 12 months
- **Increase retention**
Free vend option allows facilities to offer a complimentary inflation service to build customer loyalty or as a membership benefit
- **No need for an air supply**
The self-contained unit features a powerful on-board compressor



MADE IN SHEFFIELD



DIGITAL BICYCLE INFLATION & REPAIR STATION

- Helps increase efficiency and reduce tire wear for users - but more importantly, keeps them safely on the road
- Free vend or revenue generation options available including card or cash payments
- Ideal solution for councils and facilities managers to install in public outdoor areas
- Easy to use with self-explanatory instructions
- Convenient sidebars to securely hold the heaviest and lightest bicycles in position for repairs
- Multi tools available for unexpected repairs
- Heavy duty Schrader with Presta tire valve connector
- Flow reducers in place for ultimate safety



DIGITAL SUP INFLATION STATION

- Saves paddleboarders considerable effort, leaving them fresh and full of energy to get safely out on the water
- Capable of inflating a standard, 3-metre-long paddleboard to 15 psi in under 5 minutes
- Free vend or revenue generation options available including card payments
- Ideal solution for water sport centres, local authorities, land owners and facilities managers to install at SUP launch locations
- Easy to use with self-explanatory instructions
- Heavy duty SUP valve connector



Contact our inflation specialists to find out more



HANDHELD TIRE INFLATORS



Mid-Range Digital Inflator

DTI TIRE INFLATOR

The DTI Tire Inflator offers excellent value for money and is suitable for all kinds of tire applications, with its ability to inflate up to 170psi making it ideal for professional workshops.

Simple to operate, the hand trigger inflate and thumb-operated deflate button enable the user to inflate tires quickly and accurately. For low visibility areas, a back light further illuminates the LCD display, which incorporates a battery level indicator. The gauge itself features an auto power off function to preserve battery life. Each DTI is individually serialised and supplied with a calibration certificate traceable to international standards. The DTI is PCL's "better" mid-range alternative to the premium ACCURA 1 and makes entry level electronic inflation available to all.

Features

- Large, easy to read LCD display with back light and auto power off
- Reliable accuracy (+/- 1 psi up to 60 psi, then 2 psi up to 150 psi) with individual testing and certification
- psi, bar & kpa units of pressure selectable by button
- Easy and cost effective to use with low and simple maintenance
- Long battery life with battery level indicator

Part Number	Hose Length	Tire Valve Connection	Calibration
DTI081N	70 in / 6ft	Euro clip-on	5-170 psi / 0.34-12 bar / 34-1200 kPa
DTI08N	21 in / 1.75 ft	Euro clip-on	5-170 psi / 0.34-12 bar / 34-1200 kPa
DTI0CH2	21 in / 1.75 ft	Pro clip-on	5-170 psi / 0.34-12 bar / 34-1200 kPa
DTI0CH4	21 in / 1.75 ft	Pro angle clip-on	5-170 psi / 0.34-12 bar / 34-1200 kPa

AIRFORCE II TIRE INFLATOR

Premium Dial Inflator



Features

- Reduced operating costs - fast inflation and deflation rates
- Reduced cost of ownership - long product life, high versatility - flexible usage
- Guaranteed accuracy - Individually tested and supplied with calibration certificate
- Proven Bourdon Tube with beryllium copper construction for robustness and high shock resistance

Accuracy complies to:
BS EN12645:2014

Part Number	Hose Length	Tire Valve Connection	Calibration
AFG1H03	21 in / 1.75 ft	Twin hold-on	0-170 psi / 0-12 bar
AFG1H06	106 in / 9 ft	Twin clip-on	0-170 psi / 0-12 bar
AFG1H08N	70 in / 6ft	Euro clip-on	0-170 psi / 0-12 bar
AFG1C08	70 in / 6ft	Euro clip-on	0-12 bar

Also available: Spanish CEM Approved Models

ATI TIRE INFLATOR

Features

- Modern, lighter weight design
- Direct valve design increasing inflation and deflation rates
- Individually tested and calibration certificate supplied

Mid Range Dial Inflator



Part Number	Hose Length	Tire Valve Connection	Calibration
ATIH08	70 in / 6ft	Euro clip-on	0-170 psi / 0-12 bar
ATIH081	19 in / 1.6 ft	Euro clip-on	0-170 psi / 0-12 bar



HANDHELD TIRE INFLATORS

AIRFORCE® MK4 TIRE INFLATOR

BEST SELLER



As the world's leading linear gauge, the AIRFORCE® MK4 takes performance to a new level, offering even greater ease of use with a 20% larger screen and clearer to read scale. Meanwhile PCL's leading high performance two-stage valve design ensures accuracy and longer life compared to competitors' single-stage mechanisms, where filters are used in an attempt to protect the product. This can result in over 50% reduction in product life, with filters slowing down inflation rates, wasting valuable technician time.

Tests show the AIRFORCE® MK4 can cover more than ten times as many cycles as its main contender, making it the product of choice for users who prefer a linear tool.

Features

- New viewing window - Larger window gives 20% greater field of viewing
- Lighter weight - Less work strain and easier for repetitive use
- Biomorphic Shape - Ergonomic, easier to use and less prone to damage when dropped
- New valve mechanism - Simplified 2 stage mechanism design gives longest life available and reduces fatigue in use
- Improved piston & seal design - No internal corrosion, no sticking and no skewing of accuracy
- Accuracy standards - Tested to over 400,000 cycles at 100% accuracy

Part Number	Hose Length	Tire Valve Connection	Calibration
AFG4H03	21 in / 1.75 ft	Twin hold-on	0-138 psi / 0-9.6 bar
AFG4H04	21 in / 1.75 ft	Single clip-on	0-138 psi / 0-9.6 bar
AFG4H031	14 in / 1.18 ft	Short stem twin hold-on	0-138 psi / 0-9.6 bar
AFG4H05	70 in / 6ft	Twin clip-on	0-138 psi / 0-9.6 bar
AFG4H06	106 in / 9 ft	Twin clip-on	0-138 psi / 0-9.6 bar

Accuracy complies to:
BS EN12645:2014



AIRFORCE® MK4 TRUCK TIRE INFLATOR

PRESSURE UP TO » 174 PSI (12 BAR) 

PCL has drawn on over 80 years of world-leading tire inflation knowledge to create the new, heavy duty AIRFORCE® MK4 Truck Tire Inflator. The AFG5 can inflate up to 174 psi (12 bar) and is robust, reliable and versatile with its aluminium die cast body and linear gauge.

The same key features of the AIRFORCE® MK4 plus:

Features

- Higher inflation pressures up to 174 psi (12 bar) to cope with commercial tires of all types
- Accuracy Standards - Tested to over 400,000 cycles at 100% accuracy

Part Number	Hose Length	Tire Valve Connection	Calibration
AFG5A09	21 in / 1.75 ft	Twin angled chuck	0-174 psi / 0-12 bar
AFG5A091	21 in / 1.75 ft	Single lock on chuck	0-174 psi / 0-12 bar
AFG5A092	70 in / 6ft	Single lock on chuck	0-174 psi / 0-12 bar
AFG5H36	141 in / 12 ft	Twin clip-on	0-174 psi / 0-12 bar
AFG5A093	177 in / 15 ft	Single lock on chuck	0-174 psi / 0-12 bar



Accuracy complies to: BS EN12645:2014

HIGH PRESSURE AND AVIATION MODELS ALSO AVAILABLE

TIRE INFLATION EQUIPMENT



HANDHELD TIRE INFLATORS

AIRLITE ECO TIRE INFLATOR

Manufactured from nylon filled polymer, PCL's airlite eco Tire Inflator handles the pressures without breaking the bank. Its customer-led ergonomic design and the natural insulation of the polymer ensures user comfort. A must-have, cost-effective addition to the general trade or auto enthusiast's tool kit.

Features

- Increased window size ensures clearer vision along with accuracy
- Textured thumb lever allows greater control and comfort when inflating or deflating

Part Number Hose Length Tire Valve Connection Calibration

LAG1H03	15 in / 1.3 ft	Twin hold-on	0-140 psi / 0-9.6 bar
LAG1H08	15 in / 1.3 ft	Euro clip-on	0-140 psi / 0-9.6 bar



ALSO AVAILABLE » For an BS EN12645:2014 approved Linear Inflator with calibration certificate, please specify the premium AIRFORCE® MK4

ACCURA® MK4 DIGITAL TIRE INFLATOR

BEST SELLER

The ACCURA® MK4 takes the concepts of the world-leading MK4 into the digital age with a unique combination of the lightness, accuracy and ease of use of a digital inflator and the robustness of the toughest analogue available. The ACCURA® MK4 offers both leading inflation and deflation rates and the highest levels of accuracy and flexibility, with high performance for both indoor and outdoor applications.

Features

- Slimline biomorphic body shape gives increased comfort for the user
- Higher pressure range for multiple applications
4 - 250 psi range (including trucks)
- Permanently backlit in use, auto off after 25 seconds no-use - Easy to read in dark workshops or at night
- Large screen and clear digits - Easy and quick to read
- Individually tested and certified against national approved gauges
- Long battery life - 400 hours of use - Replaceable 2 X AAA batteries power unit (supplied)
- 3 units of calibration toggle as standard - psi, bar & kPa

Part Number Hose Length Tire Valve Connection Calibration

DAC403	21 in / 1.75 ft	Twin hold-on	4-250 psi / 0.3-17.2 bar / 30-1723 kPa
DAC409	21 in / 1.75 ft	Twin angled	4-250 psi / 0.3-17.2 bar / 30-1723 kPa
DAC40CH2	21 in / 1.75 ft	Straight single clip-on	4-250 psi / 0.3-17.2 bar / 30-1723 kPa
DAC40CH4	21 in / 1.75 ft	Angled single clip-on	4-250 psi / 0.3-17.2 bar / 30-1723 kPa
DAC405	70 in / 6ft	Twin clip-on	4-250 psi / 0.3-17.2 bar / 30-1723 kPa
DAC4099	70 in / 6ft	Straight single clip-on	4-250 psi / 0.3-17.2 bar / 30-1723 kPa
DAC406CH2	70 in / 6ft	Straight single clip-on	4-250 psi / 0.3-17.2 bar / 30-1723 kPa
DAC406CH3	70 in / 6ft	Swivel clip on with handle	4-250 psi / 0.3-17.2 bar / 30-1723 kPa
DAC406CH4	70 in / 6ft	Angled single clip-on	4-250 psi / 0.3-17.2 bar / 30-1723 kPa
DAC406	106 in / 9 ft	Twin clip-on	4-250 psi / 0.3-17.2 bar / 30-1723 kPa
DAC4061	106 in / 9 ft	Straight single clip-on	4-250 psi / 0.3-17.2 bar / 30-1723 kPa
DAC436	141 in / 12 ft	Twin clip-on	4-250 psi / 0.3-17.2 bar / 30-1723 kPa

Accuracy complies to: BS EN12645:2014



2 YEARS
EXTENDED WARRANTY

Explore the full range on the PCL website



HIGH PRESSURE AND AVIATION ANALOG HANDHELD TIRE INFLATORS

AIRFORCE® MK4 AIRCRAFT TIRE INFLATOR

HIGH PRESSURE TIRE INFLATOR

The AIRFORCE® MK4 Aircraft Tire Inflator is designed to be durable, with a cast aluminum body and impact-absorbing rubber bumper. Designed for high pressure aircraft tires, these robust, yet lightweight units are available with a calibration of 45-300 psi, and offer guaranteed accuracy.

The magnified linear gauge display is easy to read, while the attractive slim line design with ergonomic "2-click action" trigger makes them comfortable and easy to use.

The Aircraft Tire Inflator Model has a range of connector options, including SB and LB screw-on connectors with 4G1 Hydraulic Oil Resistant Armored Hose suitable for making it the new standard handheld inflator for aviation applications.

Features

- Inflate/deflate tire pressure while engaged on the tire valve system
- Individually tested calibration certificate included
- High versatility - suitable for indoor and outdoor applications
- Long life - excellent shock-resistance with robust, durable design
- Guaranteed accuracy

COMPLETE
WITH
CALIBRATION CERTIFICATE



SB & LB* CONNECTOR OPTIONS

Part Number	Description
AFG6A01	2 x 6.5 ft. 4G1 hose, SB & LB screw on chucks
AFG6H04	1 x 6.5 ft. 4G1 hose, SB screw on chuck
AFG6H041	1 x 6.5 ft. 4G1 hose, twin clip-on connector

*SB Stands for Standard Bore. LB Stands for Large Bore.

- Reading Accuracy: 5 psi
- Max. Supply Pressure: 362 psi
- Inflation Flow: 18 cfm
- Inflation Range: 45 - 300 psi
- Operating Temperature: 5°F to 131°F





HIGH PRESSURE AND AVIATION ANALOG HANDHELD TIRE INFLATORS

ACCURA® 5 AIRCRAFT TIRE INFLATOR

HIGH PRESSURE TIRE INFLATOR

The new ACCURA® 5 Aviation Tire Inflator from PCL is the latest in its line for high pressure applications, including aviation.

This takes PCL's market-leading digital tire inflator, building on its worldwide reputation for fast, accurate and trouble-free inflation and makes it suitable for aviation applications.

The ACCURA® 5 Aircraft Tire Inflator includes features such as metal inlet and outlet valves, metal internal fittings, and strong engineering plastics to cope with both the high pressure and the high usage environments seen in aviation applications.

The unit can inflate using nitrogen, air, or other gases. The ACCURA® 5 enables the operator to provide accurate tire pressures rapidly time after time with the clear digital readout and the direct valve design.

The product has a range of connector options including SB and LB screw-on connectors with 4G1 Hydraulic Oil Resistant Armored Hose suitable for making it the new standard handheld inflator for aviation applications.

Features

- Inflate/deflate tire pressure while engaged on the tire valve system
- Individually tested calibration certificate included
- High versatility - suitable for indoor and outdoor applications
- Long life - excellent shock-resistance with robust, durable design
- Guaranteed accuracy

Part Number	Description
DAC5A01	2 x 6.5 ft. 4G1 hose, 3-319 psi, SB & LB screw on chuck
DAC5A04	2 x 6.5 ft. 4G1 hose, 3-319 psi, SB screw on chuck
DAC5C01	2 x 6.5 ft. 4G1 hose, 0.2 - 22 bar, SB & LB screw on chuck
DAC5C04	2 x 6.5 ft. 4G1 hose, 0.2 - 22 bar, SB screw on chuck

*SB Stands for Standard Bore. LB Stands for Large Bore.

- Reading Accuracy: 1 psi
- Max. Supply Pressure: 350 psi
- Inflation Flow: 62 cfm
- Inflation Range: 3 - 319 psi
- Operating Temperature: -4°F to 140°F

COMPLETE
WITH
CALIBRATION CERTIFICATE



BRASS
INLET





HIGH PRESSURE AND AVIATION ANALOG HANDHELD TIRE INFLATORS

ACCURA® 6 TIRE INFLATOR

HIGH PRESSURE TIRE INFLATOR

PCL has combined the ruggedness of a metal analog inflator with the technology and additional features of a digital gauge to bring forth a new tire inflator and pressure gauge, specifically designed for the aviation industry. The ACCURA® 6 and ACCURA® 64 are lightweight, accurate, safe, and versatile. Both are virtually indestructible, with a polycarbonate screen, large backlit LCD and selectable units of pressure reading, making these the most versatile aviation products PCL has ever launched.

Features

- Long, accurate life expectancy
- Fast inflation/deflation rates - reduce operating costs
- IP54 rated - suited for indoor/outdoor environments
- Safety relief valve - prevents over inflation



Part Number	Description
DAC601	ACCURA 6 aviation tire inflator 2-6.5 ft hose, SB & LB screw on chuck
- Compliance: BS EN12645:2014 - Reading Accuracy: 0.1 psi - Max. Supply Pressure: 400 psi - Inflation Flow: 18 cfm - Inflation Range: 2 - 350 psi - Operating Temperature: 5°F to 131°F	

HIGH PRESSURE AND AVIATION DIGITAL CHECK GAUGE

ACCURA® 64 TIRE CHECK GAUGE

Features

- Long, accurate life expectancy
- Fast to use and handle
- IP54 rated - suited for indoor/outdoor environments
- Auto-off after 25 seconds of no-use
- Supplied with 2 inline hold-on tire connectors
- Registered design

Part Number	Description
DAC64	ACCURA 64 high pressure check fit
DAC6401	ACCURA 64 with 19 in / 1.6 ft hose, SB & LB connectors
DAC6401/AC	ACCURA 64/AC aviation digital tire pressure gauge
*SB Stands for Standard Bore. LB Stands for Large Bore. - Max. Supply Pressure: 350 psi - Inflation Range: 2 - 350 psi - Operating Temperature: 5°F to 131°F	





HIGH PRESSURE AND AVIATION DIGITAL CHECK GAUGE

DIGITAL TIRE PRESSURE GAUGE KIT

This high pressure digital kit takes PCL's market-leading digital tire inflation to the next level, building on its worldwide reputation for fast, accurate and trouble-free inflation. Ideal for high pressure applications such as aviation, the gauge features metal inlet and outlet valves, metal internal fittings and strong engineering plastics to cope with both the high pressure and the high usage environments seen in line and base maintenance activities.

PRESSURE UP TO » 319 PSI (22 BAR) 



Features

- Allows pressure to be measured and stored for easy reading
- Includes 2 connector types; SB twin hold on and LB single in-line hold, interchangeable
- DAC54 is suitable for high pressure environments such as Aviation
- Brass outlet valve with safety blow off valve
- Proprietary software increasing accuracy, fine metering and eliminating the chance of false readings

Part Number	Description	Hose	Tire Valve Connector	Calibration	Resolution
DAC54A	Full kit and spare battery	19 in / 1.6 ft 4G1 hose	SB twin hold-on and LB in-line	3-319 psi	1 psi
DAC54C	Full kit and spare battery	19 in / 1.6 ft 4G1 hose	SB twin hold-on and LB in-line	0.2-22 bar	0.1 bar

Other configurations available





DIAL HANDHELD INFLATORS



ECONOMY ALLOY TIRE INFLATOR

This general purpose tire inflator, with its durable, alloy body and rubber protected gauge, is ideal for lower volume and non-commercial applications. The ADTG4 Alloy Tire Inflator features a Euro style valve connector, and comes complete with operating instructions.

Features

- Simple and easy to use
- Ideal for general low volume tire inflation

Part Number	Hose Length	Tire Valve Connection	Calibration
ADTG4	33 in / 2.7 ft	Euro clip-on	10-210 psi / 0.7-15 bar



ECONOMY BLOWGUN STYLE TIRE INFLATOR

PCL's Blowgun Style Tire Inflator is a general purpose tire inflator with an all alloy body and rubber protected gauge. The LTG01 Blowgun's durable alloy body and Euro style valve connector is most suited to lower volume and non-commercial applications.

Features

- Simple and easy to use
- Ideal for general low volume tire inflation

Part Number	Hose Length	Tire Valve Connection	Calibration
LTG01	15 in / 1.3 ft	Euro clip-on	0-174 psi / 0-12 bar

FOOTPUMPS

FOOTPUMPS

PCL's Footpumps are gauge-calibrated models with an easy to read dial. The all steel construction provides extra strength, and the barrel is pressure-sealed to prevent leakage. Supplied with adaptors for air beds, cycle valves and footballs, the footpump has a sturdy, anti-slip pedal.

Features

- Steel construction for added strength
- Barrel pressure sealed to prevent leakage

Part Number	Barrel	Calibration
FP4H02/3	Single	0-100 psi / 0-7 bar
FP7H02/3	Double	0-100 psi / 0-7 bar



Supplied with various adaptors



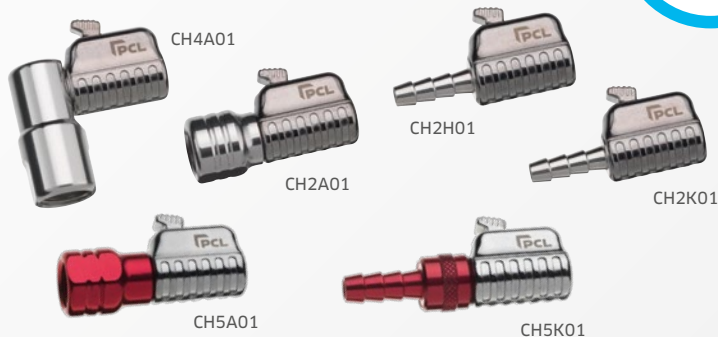
TIRE VALVE CONNECTORS

SINGLE CLIP-ON CONNECTORS



PCL's new, improved Single Clip-on Connector has been designed to bring the connector range into the 21st century. Extensive in-house and external testing has shown the enhanced product to be as robust and reliable as ever. Manufactured using the finest zinc alloy, aluminium and brass, the Single Clip-on Connector boasts a vice like grip, and is easily operated with a simple but effective thumb push button which quickly releases the tire valve, saving time and resources.

The advanced range includes standard, straight connectors, and also 90-degree connectors for those difficult to reach valves - such as those on today's bigger, more intricately designed alloy/steel wheels which are difficult to reach by hand. Available with both hose tail fitting and female threaded versions.



Once the PCL Air Connector is on, it stays on!

Features

- Does not bleed air - once the PCL Air Connector is on, it stays on!
- Simple but effective thumb push button - quickly releases the tire valve, reducing non-value added time
- Simply turn clockwise to achieve even more grip
- Highly reliable - has undergone extensive in house and external testing
- Suitable for use in garages, workshops and Tire shops

Part Number	Tire Valve Connection	Valve Style	Thread Type
CH2K01	Straight single clip-on	Open end	For 7.9mm / 5/16" bore hose
CH2H01	Straight single clip-on	Open end	For 6.35mm / 1/4" bore hose
CH2A01	Straight single clip-on	Open end	Rp 1/4 Inlet
CH4K01	Angled single clip-on	Open end	For 7.9mm / 5/16" bore hose
CH4H01	Angled single clip-on	Open end	For 6.35mm / 1/4" bore hose
CH4A01	Angled single clip-on	Open end	Rp 1/4 Inlet
CH5A01	Straight single clip-on	Closed end	Rp 1/4 Inlet
CH5H01	Straight single clip-on	Closed end	For 6.6mm bore hose
CH5K01	Straight single clip-on	Closed end	For 7.9mm bore hose
CH6A01	Angled single clip-on	Closed end	Rp 1/4 Inlet

SWIVEL CLIP-ON CONNECTORS

Now available with an ergonomic handle, these Swivel Clip-on Connectors are easy to operate and feature a vice-like grip.

Part Number	Tire Valve Connection	Thread Type
CH3A01	Twin swivel clip-on connector	Rp 1/4
CH3A02	Single swivel clip-on connector	Rp 1/4



EURO STYLE CONNECTORS

PCL's Euro style connectors are built to meet the rigours and requirements of the modern tire shop, providing excellent life and reducing leaks.



Features

- Clips onto tire valve to allow operator to work away from tire
- Suitable for use in tire shops

Part Number	Tire Valve Connection	Valve Style	Inlet Size
C08E72	Euro style clip-on	Open end	4.75 mm / 3/16 in
C08H72	Euro style clip-on	Open end	6.35 mm / 1/4 in
C08T73	Euro style clip-on	Open end	Rp 1/4
C08U73	Euro style clip-on	Closed end	Rp 1/4



TIRE VALVE CONNECTORS

TYPES OF TIRE VALVE CONNECTORS

It is important when purchasing connectors to specify whether a closed or open-end type is required.

An **open-end connector** has black handles and a pin which unseats the tire's valve., air pressure is released from the line when disconnected. This is the most commonly used type of connector and is suitable for PCL's MK4 Tire Inflator, wall and portable gauges.

A **closed end connector** features red handles and is employed when air is supplied directly from a main air line (i.e. compressor or air receiver). This type of connector holds pressure in the line even when not connected to the valve. A non-return valve unseats on connection to the tire's valve, allowing air to flow into the tire.



TWIN HOLD-ON CONNECTORS

BEST SELLER

PCL's connectors have an excellent reputation for durability, accuracy and superb sealing qualities, setting the standard for hold-ons. Using only the best components, with appropriate tests in place to evidence high quality and performance, PCL offers the full range to meet the needs of the modern tire shop and workshop, from the standard twin hold-on to the short stem and angled stem.

Features

- Suitable for inflation of dual tires
- Choice of stem length
- Colour coded handles – black for open end and red for closed end

Part Number	Description	Valve Style	Inlet Size
CO1A13	Long stem	Open end	1/4fnpt
CO1B13	Long stem	Closed end	1/4fnpt
CO5A03	Short stem	Open end	Rp 1/4
CO5B03	Short stem	Closed end	Rp 1/4
CO15A01	Angled stem	Open end	6.35 mm (1/4 in)



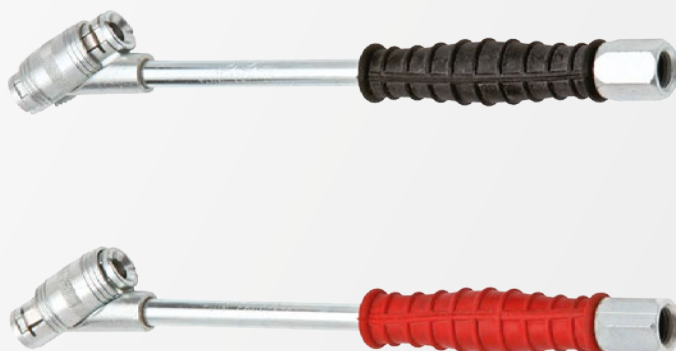
TWIN LOCK-ON CONNECTORS

PCL's Twin Lock-on Connector is suitable for the inflation of dual tires, and allows the tire operator flexibility of use for workshop applications. Clipping itself to the tire valve for additional safety, this connector is designed for performance in intensive environments, and is available in both open and closed valve styles.

Features

- Locks onto tire valve to allow operator to work away from tire
- Colour coded handles – black for open end and red for closed end
- Suitable for inflation of dual tires
- Suitable for use in tire shops

Part Number	Valve Style	Inlet Size
CO3A03	Open end	Rp 1/4
CO3B03	Closed end	Rp 1/4





TIRE VALVE CONNECTORS



CO7Q02

CO10H03

CO13A71

LARGE BORE CONNECTORS

PCL's Large Bore Clip-on Connectors are designed for tires with large bore valves such as Earthmover tires, and are available in both closed and open end valve styles.

Part Number	Tire Valve Connection	Valve Style	Inlet Size
CO7Q02	LB clip-on	Closed end	Rc 1/4 female
CO7P02	LB clip-on	Open end	Rc 1/4 female
CO10H03	LB screw-on	Open end	6.35 mm / 1/4 in
CO10P03	LB screw-on	Open end	Rp 1/4
CO11A03	LB in-line hold-on	Open end	Rp 1/4
CO13A71	Euro style LB clip-on	Open end	6.35 mm / 1/4 in



CO9P03

CO12A03

OTHER SPECIALIST CONNECTORS

PCL's specialist connectors covering varying applications include screw-on connectors for extra security during inflation, and the ever-popular in-line connector - the CO12.

Part Number	Tire Valve Connection	Valve Style	Inlet Size
CO9H03	screw-on	Open end	6.35 mm / 1/4 in
CO9P03	screw-on	Open end	Rp 1/4
CO12A03	in-line hold-on	Open end	Rp 1/4

TPMS FRIENDLY FLEXI TIRE VALVE CONNECTOR

PCL's premium TPMS friendly FLEXI Tire Valve Connector prevents damage and breakages to delicate TPMS valve stems where pressure causes them to snap, for example when using retractable air hose reels at gas stations.

Features

- Prevents connector being used as a lever on direct TPMS valve stems which causes breakages
- Allows easy reach to Motorcycle tire valves with large brake discs
- Retro-fits to existing gas station air towers and other tire inflation locations where reels may cause issue
- 8" length allows for greater hose flexibility



Part Number	Tire Valve Connection	Valve Style	Inlet Size
CO20A01	Twin hold-on	Open end	Rp 1/4
CO21A01	In-line hold-on	Open end	Rp 1/4

THUMB-LOCK CONNECTOR

PCL's original Thumb Lock Tire Valve Connector is a simple and effective way to establish a good sealing grip on a car or bicycle Tire valve, and has become a blueprint for competitors.

Features

- Ideal for use with PCL footpumps and other thumb lock applications



Part Number	Tire Valve Connection	Valve Style	Inlet Size
FPA02	Thumb-lock	Open end	4.75 mm / 3/16 in

VALVE CORE RETRACTING TOOL

PCL's 2-in-1 Valve Core Retracting Tool is designed for the safe installation and removal of tire valve cores during the inflation of commercial vehicle tires. This handy clip-on tire valve connector vastly reduces inflation / deflation time and eliminates the risk of serious injuries from "flying" valve cores.

Features

- Clear body allows operator to see when valve core is fully retracted

Part Number	Inlet Size	Tire Valve Connection
CRT001	6.35 mm / 1/4 in	Euro style clip-on
CRT002	6.35 mm / 1/4 in	Clip-on



Bringing forth the latest in high performance nitrogen generation, which combines the latest in high performance digital technology with cost-effective delivery of N₂. The Nexus series of nitrogen generators and inflators are a staple in the PCL portfolio. We're putting the control in your hands by offering you the option to inflate up to 4 tires at once.

NITROGEN INFLATION EQUIPMENT

Why Nitrogen?

Using nitrogen as an alternative to compressed air can provide enhanced handling, improved fuel efficiency, extended tire life, and most importantly, increased safety for all car users.

Nitrogen has the ability to:

- **Reduce pressure loss**

Nitrogen has a larger molecular structure than oxygen, so it migrates through the rubber tire wall much more slowly, thereby reducing the speed of pressure loss.

- **Prevent unwanted pressure changes**

Nitrogen is a dry gas which can reduce heat build up inside the tire on long journeys. This can prevent unwanted pressure increases and uneven tire wear.

- **Limit tire and wheel rim wear**

Nitrogen is a dry gas which means it doesn't oxidise (causing rust) or react with materials it comes into contact with, such as the inner tire wall and inner wheel rim.

- **Decrease fire hazard**

Fire needs oxygen. Removing and replacing it with completely inert nitrogen reduces the potential for tire fires in hazardous environments

For the road user nitrogen inflation could mean:

- **Decreased fuel consumption**

By reducing the migration of gas through a tire it will stay inflated correctly for longer. This prevents extra rolling resistance on the engine and subsequent increase in fuel use.

- **Reduced tire wear**

Tires that stay inflated to the correct pressure for longer will last for an extended period. If the correct amount of rubber is in contact with the road surface the tire tread will wear at a much slower rate.

How does nitrogen inflation benefit the tire service provider?

- **Raises business profile**

Offering nitrogen as a service provides customers with additional benefits, keeping your business competitive

- **Safety**

Correct tire inflation improves grip, maximises vehicle stability and ultimately road safety.

- **Increases customer retention**

Offer free nitrogen top-ups for life once the customer has paid for a conversion and keep them coming back!





NITROGEN GENERATOR & INFLATOR

NEXUS N6

NEXUS N6 Nitrogen Generator & Built-in Inflator is suitable for cars and vans. Nexus incorporates a number of upgrades from the previous range which includes the modern 21st century design, faster inflation times, high quality valves and fittings and bigger 90mm castors for more stability and flexibility. The chief benefits for the tire customer are that - due to Nitrogen's properties compared to air - it can offer enhanced handling, improved fuel efficiency, extended tire life, and most importantly increased safety, which is why it is used in Formula One.

Part Number	Description
-------------	-------------

NEX61A02/120	Nexus N6 - inflator & generator
--------------	---------------------------------

- Reading Accuracy: 0.5% of full scale reading
- Max. Supply Pressure: 174 psi
- Flow Rate: 7 cfm @ 12 bar supply
- Compressor Flow Rate: 19 cfm
- Hose Length: 25 ft. (x4)
- Tire Valve Connection: Single clip-on
- Dimensions: 23.6" x 18.5" x 53.7"
- Weight: 568lbs.
- Inflation Range: 0-174 lbs.



N72 CART

The N72 Nitrogen Generator and Inflator Cart is the latest evolution of Nitrogen generator and inflator units from PCL. This compact unit combines PCL's globally recognized digital inflation technology with modern Nitrogen generation technology, delivering high purity Nitrogen to the tire quickly and quietly. Powered by a rechargeable 12V battery, the N72 can easily be moved around service centers and tire shops without a power cord trailing behind and in the way. Additionally, this unit is about half the size of a standard PSA system, and around a third of its weight!

Part Number	Description
-------------	-------------

N72SAIC24	N72 Cart - inflator & generator
-----------	---------------------------------

- Reading Accuracy: 0.5% of full scale reading
- Max. Supply Pressure: 145 psi
- Flow Rate: 5 cfm @ 12 bar supply
- Hose Length: 25 ft. (x4)
- Tire Valve Connection: Single clip-on
- Dimensions: 40.5" x 21" x 25.5"
- Weight: 135lbs.
- Inflation Range: 0-174 lbs.



Other variants also available, please speak to your PCL Rep for more information



NITROGEN PERCENTAGE ANALYZER

ACCURA® NITROGEN PERCENTAGE ANALYZER

The ACCURA® Nitrogen Analyzer gives you the actual Nitrogen percentage in your tires.

Most other systems in the market show you the Oxygen percentage and require a calculation to convert it to the Nitrogen percentage.

The rugged, ergonomic design enables ease of use in motor racing pits, workshops, fleet control, tire stores, lube shops, and auto dealerships. Ease of use, fast reaction time and large digital display make the ACCURA® Nitrogen Analyzer the perfect choice.

The battery life is extended by an automatic power off function. Both the sensor and the battery can be easily replaced.

Features

- Accurate and easy to use, one button operation
- Battery charge indicator, replaceable 9V battery and sensor
- Auto-power off function
- Auto diagnostic with error code to simplify troubleshooting



Part Number	Description
-------------	-------------

N2AS001	Nitrogen percentage analyzer, replacement sensor
---------	--

N2A001	Nitrogen percentage analyzer
--------	------------------------------

*Do not connect the ACCURA® Nitrogen Analyzer to closed pressure systems above 175 psi, 12 bar, or 1200 kPa.

- Measurement Range: 70-100% Nitrogen
- Display Resolution: 0.1vol%
- Measurement Cycle: 0.5 seconds
- Response Time (90%) : less than 2 seconds
- Auto Off Time Display: 5 Minutes
- Compliance: +/- 0.5 vol% from 0 to 50 vol%
- Compliance: +/- 2 vol% from 50 to 99 vol%

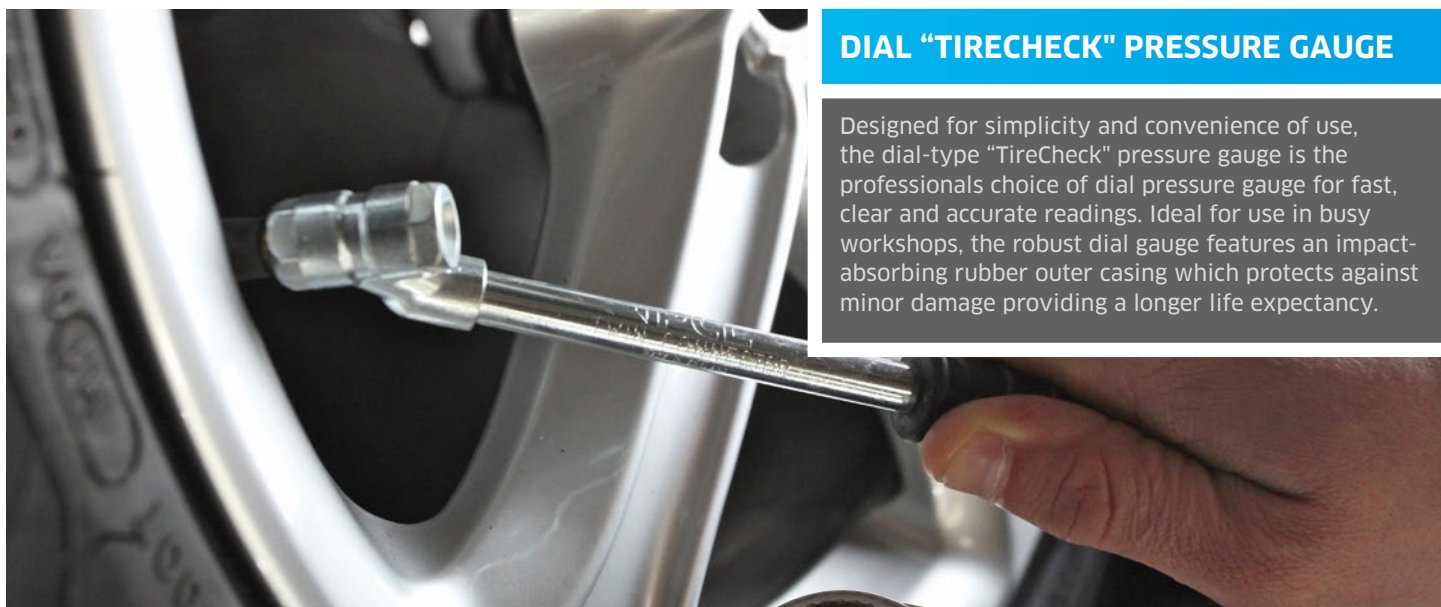




TIRE PRESSURE GAUGES

DIAL "TIRECHECK" PRESSURE GAUGE

Designed for simplicity and convenience of use, the dial-type "TireCheck" pressure gauge is the professionals choice of dial pressure gauge for fast, clear and accurate readings. Ideal for use in busy workshops, the robust dial gauge features an impact-absorbing rubber outer casing which protects against minor damage providing a longer life expectancy.



Features

- Accurate and easy to read dial gauge
- Impact absorbing rubber outer casing
- Calibration: 0-170 psi / 0-12 bar
- Resolution: 2 psi / 0.1 bar

Part Number	Dial Diameter	Tire Valve Connector	Accuracy
DPG1H03	2.48 in	Twin hold-on	+/- 1.6% FSD
DPG1H08	2.48 in	Twin clip-on	+/- 1.6% FSD
DPG3H03	3.14 in	Twin hold-on	BS EN 12645:2014
DPG3H08	3.14 in	Twin clip-on	BS EN 12645:2014

IDEAL FOR » BUSY WORKSHOPS



DIGITAL TIRE PRESSURE GAUGE

The DTPG8 Digital Tire Pressure Gauge, provides flexibility along with time and cost-savings. With a 30 second auto power off and large backlit screen for easy reading in dark or low light areas, its swivel head allows easy access to the tire valve. Designed for simplicity of use, simply press the 'ON' button and the gauge is ready to use, with tire pressures displayed in a choice of four pressure measurements.

Features

- 4 measurement options – psi, bar, kPa, kg/cm²
- Clear large backlit display with auto power off
- x2 AAA / LR03 batteries supplied
- Supplied with calibration certificate

Part Number	Tire Valve Connector	Calibration	Resolution	Accuracy
DTPG8	Twin hold-on	5-174 psi / 0.34-12 bar / 34-1200 kPa	0.2 psi / 0.01 bar / 1 kPa	+/- 1 %





PENCIL STYLE TIRE PRESSURE GAUGES

This pocket-sized pencil-style tire pressure gauge provides the convenience and confidence that it won't let you down. Unlike digital gauges, the traditional analogue gauge doesn't require batteries, so can be used at any time, in any conditions. It also incorporates a self-adjusting friction device which enables the pressure to be accurately read when the tire pressure gauge is removed from the tire valve, and a positive sealing washer to ensure reliability.

For additional convenience, the gauge is available with either an angled head, designed to fit on to the valve at 90°, or an in-line head for when straight on access to the tire valve is required.

Features

- Includes integral pocket clip and removable protective cap
- Complies with BS EN12645:2014
- Calibration: 6-50 psi / 0.5-3.4 bar
- Resolution: 1 psi / 0.1 bar
- Accuracy: +/- 2 psi

Available with angled head which is designed to fit onto the valve at 90°, or an in-line head perfect for when direct access to the tire valve is required.



TPG20H17

TPG1H07



Part Number	Head Type	Packaging
TPG1H07	Angled	Blister packed
TPG1H17	Angled	Storage Tin
TPG20H07	In-line	Blister packed
TPG20H17	In-line	Storage Tin

WITH DURABLE METAL SLIDE BARS PCL TIRE GAUGES FEATURE QUALITY YOU CAN SEE AND FEEL

CHECKING TIRE PRESSURE - WHY IT MATTERS AND HOW TO DO IT



Keeping your tires correctly inflated is vital for safety and can also help ensure an even wear rate, leading to longer tire life and reduced fuel consumption. Checking tire pressure doesn't take long, all you need is an accurate gauge and a few minutes each month and before long journeys.

1. Tires must be cool to take accurate readings, so allow around three hours to cool.
2. Check the manufacturer's recommended tire inflation levels. You will find this information in the form of a chart in the owner's manual or on the driver side door frame. This will show the correct tire pressure, marked in PSI and BAR.
3. Unscrew the sealing caps on your tire valves. Make sure to keep them somewhere safe!
4. Press the gauge on to one of the valves. You'll hear a little hiss of air.
5. Check the measurement on the scale and compare to the recommended levels on the chart. If the air pressure reading is below the recommended setting for your vehicle, add more air until you have reached the correct pressure. If your tires are overinflated, simply remove the amount of air needed for your tires to reach the recommended pressure.
6. Remove the gauge from the valve quickly to stop air escaping and screw the sealing cap back on.
7. Repeat this process for every tire (including your spare, if you have one!).



PENCIL STYLE TIRE PRESSURE GAUGES

PCL's service gauges feature a greater calibration range, making them the perfect fit for commercial vehicles. A self-adjusting friction device enables the pressure to be accurately read when the tire pressure gauge is removed from the tire valve, a positive sealing washer ensures reliability. Gauges come with an integral pocket clip, and are available with an angled head designed to attach to the valve at 90°, or a twin head for ease of use on vehicles with dual wheels.

Features

- Includes integral pocket clip and removable protective cap
- Complies with BS EN12645:2014
- Calibration: 10-120 psi / 0.8-8.2 bar
- Resolution: 2 psi / 0.2 bar
- Accuracy: +/- 2 psi

Part Number	Head Type	Packaging
TPG3H07	Angled	Blister packed
TPG4H07	Twin	Blister packed



PRESSURE UP TO » 120 PSI (8.2 BAR)

Part Number	Head Type	Packaging
TPG4H17	Twin	Storage Tin

UNIVERSAL SERVICE GAUGES

PCL's high quality "Made in Sheffield" gauge is suitable for cars and commercial vehicles and is favoured by professional mechanics. Its high quality mechanism is protected by an extra-large filter. Available with a hard-wearing black vulcanite handle to withstand prolonged use, this durable tool provides accuracy of +/- 2 psi.

Features

- Also available with a black vulcanite handle to withstand continual hard usage
- Calibration: 10-160 psi / 0.8-11 bar
- Resolution: 2 psi / 0.2 bar
- Accuracy: +/- 2 psi

Part Number	Description	Head Type
TPG57H03	Chrome plated tubing with lanyard ring	Twin
TPG60H03	Heavy duty black vulcanite handle	Twin



TWIN HEAD TIRE GAUGE

This high quality "Made in Sheffield" twin-head tire gauge is 100% individually tested and supplied with a calibration certificate. Suitable for use with standard and large bore tire valves within the aviation industry, this sturdy gauge is designed for continual heavy use.

Features

- Black vulcanite handle to withstand continual hard usage
- Supplied with calibration certificate
- Calibration: 50-300 psi / 4-20 bar
- Resolution: 5 psi / 0.2 bar
- Accuracy: +/- 5 psi

Part Number	Head Type
TPG54H03	Twin



PRESSURE UP TO » 300 PSI (20 BAR)

TIRE SAFETY PACKS

PCL's Standard Tire Safety Pack comprises a pencil-style tire pressure gauge and a tire tread depth gauge stored in a durable and reusable foam-packed metal case. The traditional but accurate tire pressure gauge is available with either an angled or in-line head, and either set includes the "Made in Sheffield" tire tread depth gauge.

Features

- A positive sealing washer ensures reliability
- Self-adjusting friction device
- Accurate measurement of tread 0 - 32/32nds

Part Number	Kit Contents
TSP3T15	TPG1 & TDG1B816
TSP40T15	TPG20 & TDG1B816



TSP40T15

TSP3T15



TIRE TREAD DEPTH GAUGES

TIRE TREAD DEPTH GAUGE

BEST SELLER

PCL's "Made in Sheffield" Tire Tread Depth Gauge is manufactured to stringent quality standards and is DVSA (previously VOSA) MOT centre approved. Easy to read, it provides accurate measurement of tread 1-26mm and features a 1.6mm illegal tyre tread depth mark, allowing the operator to quickly check whether the tire tread is below legal limits and needs to be replaced.

Features

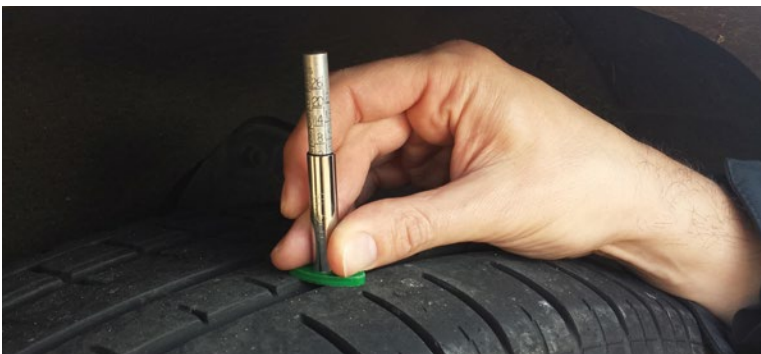
- Accurate measurement of tread 1-26 mm in 1 mm increments
- 1.6mm illegal tyre tread depth mark
- Department of Transport accepted for MOT testing



**DVSA
MOT
centre
approved**

Part Number	Calibration	Resolution	Accuracy
TDG16C01	0-25 mm	1 mm	0.25 mm
TDG1B816	0-1 in	1/32 in	1/128 in

TIRE TREAD DEPTH



How to measure your tire tread depth with a gauge

You can carry out a visual check of the tread wear indicators to assess the levels of your tread depth. These indicators are small raised areas at the bottom of the grooves on your tires.

If the surface of the tread rubber is level with these raised areas, the tire tread depth is approaching the legal limit and you should have your tires checked and replaced.

However, using a tire tread depth gauge will provide a more accurate measurement and is simple to do.

1. Extend the measuring probe on the tread depth gauge as far as it will go.
2. Place the probe into the tread groove, making sure not to place it on the tread wear indicators or any raised surfaces of the tread design. Push down on the gauge's base.
3. Measurements must be taken around the whole circumference of the tire and across the central three-quarters of the width of the tire.
4. Repeat the process on every tire, including the spare.



DIGITAL TIRE TREAD DEPTH GAUGE

This Tire Tread Depth Gauge is designed to be straight-forward and simple to use. The battery-operated measurement device features a large, easy-to-read LCD display with three different read settings, and a Zero setting in any position allowing easy zero reset. Made from lightweight, extra-strong carbon fibre composite, the strong and robust housing material ensures a longer life expectancy.

Features

- Made from extra strong carbon fibre composite
- Metric, decimal inch and fraction inch (1/64 in) toggle
- Large LCD display
- x1 SR44 1.5 v battery supplied
- Zero setting in any position

Part Number	Calibration	Resolution	Accuracy
DTDG1D04	0-25 mm / 0-1 in	0.01 mm / 0.0005 in / 1/64 in	0.2 mm



TIRE PRESSURE & DEPTH GAUGES

DIGITAL TIRE PRESSURE & DEPTH GAUGE

BEST SELLER



PCL's 3-in-1 Digital Tire Pressure and Tread Depth Gauge features a large backlit screen with stylish blue light and 90 second auto power off - making it ideal for easy reading at night and in dark workshops or low light areas. Designed for ease of use, the display will flash to indicate an illegal tire tread depth warning below 1.6 mm, allowing the operator to quickly check whether the tires need to be replaced.



Features

- Low tire tread depth warning - display will flash if the reading is 1.6 mm or less
- Large backlit screen and blue light - ideal for use at night or dark workshops
- Auto power off
- x1 CR2032 3 v battery supplied

Part Number	Calibration	Resolution	Accuracy
DTPG7	2-100 psi / 0.15-7 bar & 15-700 kPa & 0-15 mm	0.1 psi / 0.01 bar / 1 kPa & 0.01 mm / 0.001 in	+/- 1.5% & +/- 0.2 mm

METRIC TIRE SAFETY PACK

PCL's Metric Tire Safety Pack comprises a pencil-style tire pressure gauge and a tire tread depth gauge stored in a durable and reusable foam-packed metal case. The traditional but accurate tire pressure gauge is available with either an angled or in-line head, and the "Made in Sheffield" tire tread depth gauge is DVSA-approved for MOT testing with a 1.6mm mark.

Features

- A positive sealing washer ensures reliability
- Self-adjusting friction device
- DVSA approved for MOT testing
- Accurate measurement of tread 1-26 mm
- 1.6 mm illegal tire tread depth mark

Part Number Kit Contents

TSP1T15	TPG1 & TDG16C01
TSP20T15	TPG20 & TDG16C01





TEST EQUIPMENT

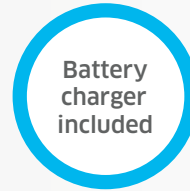
CALIBRATION TEST UNIT

Lightweight and portable, PCL's TE3 Calibration Test Unit is used to check the calibration of all types of tire inflation equipment, and is supplied with a calibration certificate. The rechargeable TE3 unit is housed in a robust and durable protective case to prevent damage, whilst the 21mm backlit LCD provides clearer and more concise readings than those of an analogue gauge.

Features

- 4 litre receiver manufactured in accordance with 2009/105/EC
- Supplied with calibration certificate
- Resettable zero point
- Battery powered with battery charger included
- Accuracy class: 1/4 of EN12645:2014

Part Number	Calibration	Resolution
TE3	0-12.2 bar / 0-1220 kPa / 0-176 psi	0.01 bar / 1 kPa / 0.1 psi



MASTER PRESSURE GAUGE

PCL's "Made in Sheffield" Master Pressure Gauge is highly regarded for its reliability and accuracy, and offers such longevity it is often handed down through generations. Designed for checking the accuracy of on-site gauges, the Master comes protected in a solid wooden box and is a firm favourite amongst tyre fitters, commercial fleet operators and the emergency services.

Features

- Designed for checking the accuracy of on-site gauges
- Protected in a solid wooden box with moulded tray
- Supplied complete with calibration certificate
- Complies to: BS EN 12645:2014

Part Number	Calibration	Accuracy
TE60H01	10-160 psi / 0.8-11 bar	+/- 0.1 bar / 1 psi



TIRE TOOLS

4-IN-1 TIRE VALVE TOOL

Manufactured for over 50 years in Sheffield, the versatile 4-in-1 Tire Valve Removal Tool is a hard-wearing and valuable piece of workshop equipment. Manufactured in zinc-plated steel for longevity of life, this handy tool is capable of tackling four different valve-related tasks, including rethreading the external and internal part of the valve stem, removing the valve core, and extracting a damaged valve core.

Features

- Manufactured with case-hardened mild steel and a zinc-plated finish



Part Number	Description
TVT01	4-in-1 Tire Valve Tool

TIRE VALVE CORE REMOVAL TOOL

Effortlessly remove and install valve cores with this workshop ready tool. Designed with a comfortable, easy-grip handle and built-in magnet to securely hold the core, preventing loss during use.

Features

- Quick and easy valve core removal
- Strong magnet to keep core secure
- Ideal for busy workshops and garages



Part Number	Description	Length
CRT501	Tire Valve Core Removal Tool	3.88 in

HIGH FLOW RANGE

XF-EURO SERIES

BEST SELLER

Commonly referred to as Euro Couplings, the XF-Euro series boasts excellent flow characteristics, providing the workshop with increased airflow when required, giving enhanced tool efficiency.

Features

- High flow rate of 130 cfm @ 100 psi
- Steel construction with corrosive resistant finish
- Steel shoulder helps prevent accidental disconnection
- Enhances tool efficiency

INTERCHANGEABLE »
 CEJN 320
 LEGRIS 25/26
 NORGREN 234/238
 RECTUS 25/26
 SCHRADER INTERCHECK 35



Part Number Thread Type Thread Size

XF-Euro Couplings

AC71CM	Male	R 1/4
USAC71CM*	Male	NPT 1/4
AC71EM	Male	R 3/8
AC71JM	Male	R 1/2
USAC71JM*	Male	NPT 1/2
AC71CF	Female	Rp 1/4
USAC71CF*	Female	NPT 1/4
AC71EF	Female	Rp 3/8
AC71JF	Female	Rp 1/2
USAC71JF*	Female	NPT 1/2
AC7106	Hose Tailpiece	6 mm
AC7108	Hose Tailpiece	8 mm
AC7109	Hose Tailpiece	9 mm
AC7110	Hose Tailpiece	10 mm
AC7113	Hose Tailpiece	13 mm

- Nominal bore: 7.4 mm
- Flow rate @ 6 bar (0.5 bar p.d.): 2,200 l/min
- Maximum working pressure: 35 bar / 508 psi
- Temperature range: -40°F to 212°F

*MOQ Applies

Part Number Thread Type Thread Size

XF-Euro Adaptors

AA7101	Male	R 1/8
AA7102	Male	R 1/4
USAA7102*	Male	NPT 1/4
AA7103	Male	R 3/8
AA7104	Male	R 1/2
USAA7104*	Male	NPT 1/2
AA7105	Female	Rp 1/8
AA7106	Female	Rp 1/4
USAA7106*	Female	NPT 1/4
AA7107	Female	Rp 3/8
AA7108	Female	Rp 1/2
USAA7108*	Female	NPT 1/2
AA7109	Hose Tailpiece	4 mm
AA7110	Hose Tailpiece	6 mm
AA7111	Hose Tailpiece	8 mm
AA7114	Hose Tailpiece	9 mm
AA7112	Hose Tailpiece	10 mm
AA7113	Hose Tailpiece	13 mm

XF-Euro Safety Adaptors

AA7103/STY	Male	R 3/8
------------	------	-------



STANDARD RANGE

VERTEX SERIES

Designed and manufactured in Sheffield by PCL, these quick release Vertex Couplings feature a double action mechanism. This makes them ideal in garages and tyreshops, where operators are using air tools or handheld inflators for trailing hose applications.



Part Number Thread Type Thread Size

Vertex Couplings

AC91CM	Male	R 1/4
AC91EM	Male	R 3/8
AC91JM	Male	R 1/2
AC91CF	Female	Rp 1/4
AC91EF	Female	Rp 3/8
AC91JF	Female	Rp 1/2
AC91R	Hose Tailpiece	7 mm / 1/4 in
AC91S	Hose Tailpiece	8 mm / 5/16 in
AC91T	Hose Tailpiece	10 mm / 3/8 in
AC6503	Twin Coupling	N/A

- Nominal bore: 4.8 mm
- Flow rate: 43 cfm @ 100 psi
- Maximum working pressure: 14 bar / 200 psi
- Temperature range: -40°F to 212°F

Features

- Double action
- Protective shoulder helps to prevent dirt penetration
- Steel construction
- Corrosive resistant finish
- Case-hardened steel adaptors
- Ideal for use in the garage and tire shop environments
- Designed for trailing hose applications

INTERCHANGEABLE » RECTUS 19



Part Number Thread Type Thread Size

Standard Adaptors

ACA2593	Male	R 1/4
ACA6909	Male	R 3/8
ACA6584	Male	R 1/2
ACA2746	Female	Rp 1/4
ACA6582	Female	Rp 3/8
ACA6583	Female	Rp 1/2
ACA2486	Hose Tailpiece	4.75 mm / 3/16 in
ACA1793	Hose Tailpiece	6.35 mm / 1/4 in
ACA2487	Hose Tailpiece	7.9 mm / 5/16 in
ACA2488	Hose Tailpiece	9.5 mm / 3/8 in
ACA9438	Hose Tailpiece	13 mm / 1/2 in

Standard Safety Adaptor

ACA9101	Male	R 1/4
---------	------	-------

MATCHING COUPLINGS AND ADAPTORS

Identifying couplings can be difficult, especially if there is no branding etched or printed on the sleeve - and when it comes to adaptors, different profiles do not interchange. For example, an XF-Euro adaptor will not fit into a Vertex coupling.

Therefore the most important aspect of identifying couplings and adaptors is to establish their profile.

That's why our brochure places them in series so it's easy to see which fit together, whilst our

"actual size adaptor profile" chart on page 40 enables adaptors to be matched to the outlines of those shown on the page.

The coupling can then be identified by establishing the adaptor that fits into it using the method above.

PCL couplings and adaptors are manufactured to conform to international standards and are interchangeable with other manufacturers' couplings and adaptors using the same standards.

Jargon Buster

Couplings are often referred to as either "females" or "sockets" or "couplers".

Adaptors are also known as "males" or "plugs" or "nipples".

Nominal bore is the term used for the internal diameter of the hole that runs through the length of the adaptor.



BAYONET RANGE

INSTANTAIR SERIES

PCL's "Made in Sheffield" bayonet type, quick acting couplings feature a positive seal, and are designed for maximum efficiency and to prevent accidental uncoupling.

Features

- Bayonet type couplings
- Zinc plated steel / Brass chrome plated
- High temperature version also available



- Nominal bore: 5.6 mm
- Flow rate: 54 cfm @ 100 psi
- Maximum working pressure: 17 bar / 250 psi
- Temperature range: -4°F to 176°F
- Suitable for use with: InstantAir Adaptors



Part Number Broomwade Reference Thread Type Thread Size

InstantAir Couplings			
AC51CM	PT8825	Male	G 1/4
AC51EM	PT8827	Male	G 3/8
AC51JM	PT9095	Male	R 1/2
AC51CF	PT8823	Female	Rp 1/4
AC51EF	PT8800	Female	Rp 3/8
AC51JF	PT9096	Female	Rp 1/2
AC51R	PT8800/SU4	Hose Tailpiece	6.35 mm / 1/4 in
AC51S	PT8800/SU5	Hose Tailpiece	7.9 mm / 5/16 in
AC51T	PT8800/SU6	Hose Tailpiece	9.5 mm / 3/8 in
Brass Chrome Plated InstantAir Couplings			
AC52CM	PT8826	Male	R 1/4
AC52CF	PT8824	Female	Rp 1/4

Part Number Broomwade Reference Thread Type Thread Size

InstantAir Adaptors			
AA5102	PT8808	Male	G 1/4
AA5103	PT8817	Male	G 3/8
AA5106	PT8806	Female	Rp 1/4
AA5107	PT8802	Female	Rp 3/8
AA5110	PT8802/SU4	Hose Tailpiece	6.35 mm / 1/4 in
AA5111	PT8802/SU5	Hose Tailpiece	7.9 mm / 5/16 in
AA5112	PT8802/SU6	Hose Tailpiece	9.5 mm / 3/8 in
InstantAir Safety Adaptors			
AA5103/STV		Male	R 3/8
Brass Chrome Plated InstantAir Adaptors			
AA5202	PT8809	Male	R 1/4

INSTANTAIR SWIVEL ADAPTORS

PCL's InstantAir Swivel Adaptors are suitable for most fixed compressed air applications, although swivel adaptors are recommended for trailing hose applications.



Part Number Broomwade Reference Thread Type Thread Size

InstantAir Swivel Adaptors			
AA5302	PT8836	Male	G 1/4
AA5303	PT8838	Male	G 3/8
AA5306	PT8834	Female	Rp 1/4
AA5307	PT8804	Female	Rp 3/8
AA5310	PT8804/SU4	Hose Tailpiece	6.35 mm / 1/4 in
AA5311	PT8804/SU5	Hose Tailpiece	7.9 mm / 5/16 in
AA5312	PT8804/SU6	Hose Tailpiece	9.5 mm / 3/8 in
Brass Chrome Plated InstantAir Swivel Adaptors			
AA5402	PT8837	Male	R 1/4

- Maximum working pressure - Under continuous rotation: 10 bar / 145 psi
- Maximum working pressure - Static and random rotation: 17 bar / 245 psi



INTERCHANGE RANGE

MINI SERIES

Specially designed for light engineering environments, PCL's range of small-bore couplings has proved popular in the robotics, medical, instrumentation and automation industries.

Features

- Manufactured in brass with chrome plate finish
- Lightweight and compact design
- Single action / one handed operation

INTERCHANGEABLE »
CAMOZZI MINI
LEGRIS 21
NORGREN 233
RECTUS 21
SCHRADER MINI



Part Number Thread Type Thread Size

Mini Couplings

AC11AM	Male	R 1/8
AC11CM	Male	R 1/4
AC11AF	Female	Rp 1/8
AC11CF	Female	Rp 1/4
AC11RF6/4	Tube Connector	6 mm OD - 4 mm ID
AC11RF8/6	Tube Connector	8 mm OD - 6 mm ID
AC1106	Hose Tailpiece	6 mm
AC1108	Hose Tailpiece	8 mm
AC1109	Hose Tailpiece	9 mm



Part Number Thread Type Thread Size

Mini Adaptors

AA11AM	Male	R 1/8
AA11CM	Male	R 1/4
AA11AF	Female	Rp 1/8
AA11CF	Female	Rp 1/4
AA11RF6/4	Tube Connector	6 mm OD - 4 mm ID
AA11RF8/6	Tube Connector	8 mm OD - 6 mm ID
AA1104	Hose Tailpiece	4 mm
AA1106	Hose Tailpiece	6 mm
AA1109	Hose Tailpiece	9 mm

- Nominal bore: 5.0 mm
 - Flow rate @ 6 bar (0.5 bar p.d.): 560 l/min
 - Maximum working pressure: 35 bar / 508 psi
 - Temperature range: -4°F to 176°F
- Tube connector supplied with locking nut and tube note



INTERCHANGE RANGE

KF SERIES

PCL's KF Series is ideal for portable air tool and industrial applications, offering excellent flow characteristics, commonly used in Asian and Oceania markets where this adaptor profile is required.

Features

- Offers enhanced tool efficiency
- Steel construction with corrosive resistant finish
- Steel shoulder helps prevent accidental disconnection
- Offers excellent flow characteristics



INTERCHANGEABLE »
CEJN 315
NITTO KOHKI 200
RECTUS 13

Part Number Thread Type Thread Size

KF Couplings

AC78CM	Male	R 1/4
AC78EM	Male	R 3/8
AC78JM	Male	R 1/2
AC78CF	Female	Rp 1/4
AC78EF	Female	Rp 3/8
AC78JF	Female	Rp 1/2
AC7806	Hose Tailpiece	6 mm
AC7808	Hose Tailpiece	8 mm
AC7810	Hose Tailpiece	10 mm
AC7813	Hose Tailpiece	13 mm

KF Adaptors

AA7802	Male	R 1/4
AA7803	Male	R 3/8
AA7804	Male	R 1/2
AA7806	Female	Rp 1/4
AA7807	Female	Rp 3/8
AA7808	Female	Rp 1/2
AA7810	Hose Tailpiece	6 mm
AA7811	Hose Tailpiece	8 mm
AA7812	Hose Tailpiece	10 mm
AA7813	Hose Tailpiece	13 mm

- Nominal bore: 7.6 mm
- Flow rate @ 6 bar (0.5 bar p.d.): 2,100 l/min
- Maximum working pressure: 35 bar / 508 psi
- Temperature range: -40°F to 212°F



NATO COUPLING

Designed and manufactured by PCL in Sheffield, this NATO Coupling is for specialist use such as breathing air, and has been approved for use by the UK Ministry of Defence.

Materials

- NBR70 (Seal)
- Stainless Steel to BS2056
302S26 G2 (Sleeve spring, Conical valve spring)
- CZ121M (Ring end valve, Non-corrodible Shuttle, Non-corrodible con nut Rp 1/4, NATO sleeve, NATO body)
- CZ108 (Non-corrodible Spring seat)
- 3/16" Phosphor bronze ball

Part Number Thread Type Thread Size

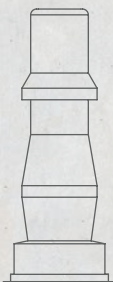
AC33CF	Female	Rp 1/4
--------	--------	--------

- Nominal bore: 5 mm
- Flow rate @ 100 psi supply: 43 cfm
- Maximum working pressure: 14 bar / 200bpsi
- Temperature range: -40°F to 212°F

Etched version also available (Part no. AC33CF/ETCHED)



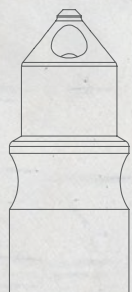
ACTUAL SIZE ADAPTOR PROFILES



STANDARD RANGE

The adaptor profiles displayed are actual size - just place your adaptor on the matching drawing to find its interchange.

Learn how to identify couplings & adaptors



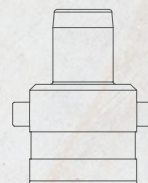
100 SERIES



60 SERIES



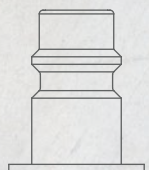
MINI RANGE



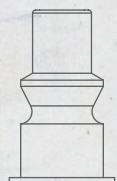
INSTANTAIR RANGE



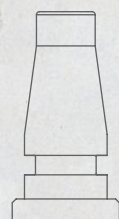
HEAVY DUTY SCHRADER



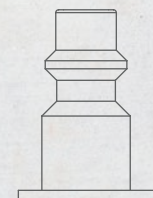
XF-EURO RANGE



A STYLE RANGE



PF RANGE



ISO B12 RANGE



KF RANGE

ACTUAL SIZE THEADFORM PROFILES

Male thread profiles, displayed as actual size - just place your thread on the matching drawing to find its size.

R, Rp, Rc threads are taken from BS21:1985 pipe threads for tubes and fittings where pressure tight joints are made on the threads.

G threads are taken from BS2779:1986 pipe threads for tubes and fittings where pressure tight joints are not made on the threads

R 1/8 MALE THREAD

R 1/4 MALE THREAD

R 3/8 MALE THREAD

R 1/2 MALE THREAD





HOSE CONNECTORS

HOSE TAIL ADAPTOR

This corrosive-resistant, plated Hose Tail Adaptor connects the hose to a female fitting.

Part Number Hose Internal Diameter

Male Thread: R 1/4

HC1206 7.9 mm / 5/16 in

HC1217 9.5 mm / 3/8 in

Male Thread: R 3/8

HC2808 12.7 mm / 1/2 in

Male Thread: R 1/2

HC2954 12.7 mm / 1/2 in



REDUCING BUSH

The corrosive-resistant Reducing Bush is used to increase thread size when connecting differing hose diameters.



Part Number Thread Type

Thread Type

HC6895 R 3/8 (Male) Rp 1/4 (Female)

HC6896 R 1/2 (Male) Rp 1/4 (Female)

HC6897 R 1/2 (Male) Rp 3/8 (Female)

HC6892 Rp 3/8 (Female) Rp 1/4 (Female)

HC6893 Rp 1/2 (Female) Rp 1/4 (Female)

REDUCING UNION

The corrosive-resistant Reducing Union is used to connect fittings.

Part Number Male Thread (1) Male Thread (2)

HC6899 R 3/8 R 1/4

HC6900 R 1/2 R 1/4

HC6901 R 1/2 R 3/8



DOUBLE UNION

This corrosive-resistant nut is used to connect fittings (male to male).

Part Number Male Thread

HC6560 R 1/4

HC4281 R 3/8

HC6898 R 1/2



PARALLEL SOCKET

A corrosive-resistant plated socket used for straight connections.

Part Number Female Thread (1) Female Thread (2)

HC6889 Rp 1/4 Rp 1/4

HC2543-3/8 Rp 3/8 Rp 3/8

HC2543-1/2 Rp 1/2 Rp 1/2



Y PIECE CONNECTOR

For splitting a single connection into two, the Y Piece enables the use of more than one air tool.

Part Number Female Thread

SPR4279 Rp 1/4

SPR4280 Rp 3/8

HC2043-1/2 Rp 1/2



UNION SWIVEL NUT

The corrosive-resistant Union Swivel Nut is used in conjunction with Coned Tailpieces for various connection types.

Part Number Suitable For Coned Tailpiece Part Number

Female Thread: Rp 1/4

HC5194 4.75 mm / 3/16 in to 7.9 mm / 5/16 in HC5030, HC5275, HC5276

HC1226 9.5 mm / 3/8 in HC1225

Female Thread: Rp 3/8

HC2181 6.35 mm / 1/4 in to 9.5 mm / 3/8 in, HC2192, HC2594



CONED TAILPIECE

Made from hardened steel with corrosive-resistant plating for long life and durability, the Coned Tailpiece is used in conjunction with union nuts to connect the hose to a male threaded fitting.

Part Number Hose Internal Diameter

Union Nut Size: R 1/4

HC5030 4.75 mm / 3/16 in

HC5275 6.35 mm / 1/4 in

HC5276 7.9 mm / 5/16 in

HC1225 9.5 mm / 3/8 in

Union Nut Size: R 3/8

HC2595 6.35 mm / 1/4 in

HC2594 7.9 mm / 5/16 in

HC2192 9.5 mm / 3/8 in



Explore the full range on the PCL website



HOSE CLIPS

'O' CLIP KITS

The 'O' Clip Kit from is handy for when you need a selection of different size clips on the move. This versatile, convenient dispenser is suitable for the most popular sizes of double ear clips, with or without a side closing pincer.



Part Number	Dimensions (mm)	Kit Contents
OK175	40h X 270w X 175d	x20: 0507, 0911, 1113, 1417, 1518, 1720 x25: 0709 x30: 1315
OK175P	40h X 270w X 175d	As above plus x1: Side Closing 'O' Clip Pincer

OK175P

'O' CLIPS

'O' Clips are two ear clamps, mainly used on air, fluid, gas and steam lines but also suitable for low pressure hydraulic applications. Instead of a screw mechanism, pincers are used to provide a secure seal, crimping the ears of the clamp. This makes them particularly useful on extremely small hoses. The tamper-proof nature of the fitting makes Jubilee® 'O' Clips ideal for when a neat finish is required, with no bulky housing to catch on obstructions.



Part Number	Size	Clamping Range	Box Quantity
OC0507	0507	5 - 7 mm	50
OC0709	0709	7 - 9 mm	50
OC0911	0911	9 - 11 mm	50
OC1113	1113	11 - 13 mm	50
OC1315	1315	13 - 15 mm	50
OC1417	1417	14 - 17 mm	50
OC1518	1518	15 - 18 mm	50
OC1720	1720	17 - 20 mm	50
OC1821	1821	18 - 21 mm	50
OC2023	2023	20 - 23 mm	50

Part Number	Size	Clamping Range	Box Quantity
OC2225	2225	22 - 25 mm	25
OC2327	2327	23 - 27 mm	25
OC2528	2528	25 - 28 mm	25
OC2831	2831	28 - 31 mm	25
OC3134	3134	31 - 34 mm	25
OC3437	3437	34 - 37 mm	25
OC3740	3740	37 - 40 mm	25
OC4043	4043	40 - 43 mm	25
OC4346	4346	43 - 46 mm	25

HOSE CLIP TOOLS

SIDE CLOSING 'O' CLIP PINCER

The high-precision Side Closing Pincer is especially designed to easily crimp and obtain a secure seal of Jubilee® 'O' Clips (two ear clamps).

Part Number	Description
CPR01	Side Closing 'O' Clip Pincer





AIR HOSE ASSEMBLIES

AIR TOOL HOSE ASSEMBLIES

PCL's air tool hose is made from a high-performance TPE compound which looks and feels like rubber but doesn't have its associated downsides. Available in popular cut lengths complete with PCL fittings, investing in a PCL air tool hose saves the time and expense of buying expensive crimping equipment.

Just plug in and go.

Features

- Resistance to oil and fuels
- Good flexibility and kink resistant
- Silicone free

VERTEX COUPLING & STANDARD ADAPTOR AIR TOOL HOSE



Part Number	Hose Length	Inside Diameter
HA2135	15 ft / 196 in	8 mm / 5/16 in
HA2125	32 ft / 393 in	8 mm / 5/16 in
HA2137	49 ft / 590 in	8 mm / 5/16 in
HA2138	65 ft / 787 in	8 mm / 5/16 in

HA2133	15 ft / 196 in	10 mm / 3/8 in
HA2134	32 ft / 393 in	10 mm / 3/8 in
HA2139	49 ft / 590 in	10 mm / 3/8 in
HA2129	65 ft / 787 in	10 mm / 3/8 in

STANDARD ADAPTOR & R1/4 MALE AIR TOOL HOSE



Part Number	Hose Length	Inside Diameter
HA2112	32 ft / 393 in	8 mm / 5/16 in
HA2113	65 ft / 787 in	8 mm / 5/16 in
RHA2036	32 ft / 393 in	10 mm / 3/8 in
RHA2037	65 ft / 787 in	10 mm / 3/8 in

XF-EURO COUPLING & ADAPTOR AIR TOOL HOSE



Part Number	Hose Length	Inside Diameter
HA2140	15 ft / 196 in	10 mm / 3/8 in
HA2141	32 ft / 393 in	10 mm / 3/8 in
HA2142	49 ft / 590 in	10 mm / 3/8 in
HA2143	65 ft / 787 in	10 mm / 3/8 in

HIGH VISIBILITY AIR HOSE ASSEMBLIES

This bright yellow hose is manufactured from reinforced material, providing high visibility for extra safety.

Available in popular cut lengths complete with end fittings, saving you time and the need for expensive crimping equipment.

Features

- High visibility to increase safety
- Good flexibility and kink resistant
- Resistance to oil and fuels
- Silicone free

HIGH VISIBILITY HOSE with Rp 1/4 Swivel Ends



Part Number	Hose Length	Inside Diameter
HA2044HV	32 ft / 393 in	10 mm / 3/8 in
HA2022HV	49 ft / 590 in	10 mm / 3/8 in
HA2046HV	65 ft / 787 in	10 mm / 3/8 in

HIGH VISIBILITY HOSE with Vertex Coupling and Standard Adaptor



Part Number	Hose Length	Inside Diameter
HA2134HV	65 ft / 787 in	10 mm / 3/8 in
HA2129HV	65 ft / 787 in	10 mm / 3/8 in

AIR TOOL HOSE SPECIFICATION

- Working pressure: 20 bar / 290 psi
- Burst pressure: 60 bar / 870 psi (3:1 safety factor)
- Temperature range: -5°F to 140°F

HIGH VISIBILITY AIR HOSE SPECIFICATION

- Working pressure: 21 bar / 300 psi
- Burst pressure: 63 bar / 900 psi (3:1 safety factor)
- Temperature range: -5°F to 140°F

Please note for both hose types - an increase in temperature above 68°F will affect the working pressure quoted above.



AIR HOSE ASSEMBLIES

SUPERFLEX HOSE ASSEMBLIES

BEST SELLER

PCL's 9.5mm (3/8") SuperFlex hose is designed to be extremely flexible and hard-wearing.

Highly resistant to ultra-violet and a wide range of acids and alkalis, SuperFlex assemblies provide longer service life and are suitable for a wider range of applications.

In addition, the SuperFlex features anti-kink characteristics, with elimination of hose kinks resulting in minimum air flow loss.

Features

- Soft touch for excellent handling - Increased comfort for the user
- Extremely flexible with good anti-kink characteristics - Minimum air flow loss
- Durable with excellent ageing and ultra-violet resistance - Increased service life
- Highly resistant to a wide range of acids and alkalis - Suitable for a wide range of applications

- Working pressure: 14 bar / 200 psi
- Burst pressure: 42 bar / 600 psi (3:1 safety factor)
- Temperature range: 5°F to 140°F



SUPERFLEX HOSE with Standard Adaptor and Vertex Coupling Fittings

Part Number	Hose Length	Inside Diameter (mm)
HA2133SF	15 ft / 196 in	9.5
HA2134SF	32 ft / 393 in	9.5
HA2139SF	49 ft / 590 in	9.5
HA2129SF	65 ft / 787 in	9.5



SUPERFLEX HOSE with XF-Euro Fittings

Part Number	Hose Length	Inside Diameter (mm)
HA2140SF	15 ft / 196 in	9.5
HA2141SF	32 ft / 393 in	9.5
HA2142SF	49 ft / 590 in	9.5
HA2143SF	65 ft / 787 in	9.5



SUPERFLEX HOSE with Rp 1/4 Swivel End Fittings

Part Number	Hose Length	Inside Diameter (mm)
HA2043SF	15 ft / 196 in	9.5
HA2044SF	32 ft / 393 in	9.5
HA2045SF	49 ft / 590 in	9.5
HA2046SF	65 ft / 787 in	9.5



SUPERFLEX HOSE with No End Fittings

Part Number	Hose Length	Inside Diameter (mm)
HS25B01SF	15 ft / 196 in	9.5
HS25C01SF	32 ft / 393 in	9.5
HS25D01SF	49 ft / 590 in	9.5
HS25E01SF	65 ft / 787 in	9.5
HS25X01SF	328 ft / 3937 in	9.5



AIR HOSE ASSEMBLIES

POLYURETHANE COILED AIR HOSE ASSEMBLIES

PU Coiled Air Hose Assemblies are made from Polyurethane (PU) material rather than nylon, increasing the effective working temperature range and removing limitations such as kinking, abrasion and resistance to oils.

PU allows use in any direction, eliminating hose kinks to aid air flow. It also provides ease of use when attached to tools, helps protect tool ends and leaves the work area clear of entanglements and trip hazards. Available in a range of colours, hose sizes and working lengths.



Part Number	Fittings	Hose Length	Inside Diameter (mm)	Outside Diameter (mm)
Colour: Red				
HA5209	R 1/4 Swivel Ends	8 ft / 98 in	6.5	10
HA5211	R 1/4 Swivel Ends	16 ft / 196 in	6.5	10
HA5213	R 1/4 Swivel Ends	24 ft / 295 in	6.5	10
HA5216	R 1/4 Swivel Ends	24 ft / 295 in	8	12
HA5218	R 1/4 Swivel Ends	32 ft / 393 in	8	12
HA5220	R 3/8 Swivel Ends	32 ft / 393 in	10	15
Colour: Blue				
HA5210	R 1/4 Swivel Ends	8 ft / 98 in	6.5	10
HA5212	R 1/4 Swivel Ends	16 ft / 196 in	6.5	10
HA5214	R 1/4 Swivel Ends	24 ft / 295 in	6.5	10
HA5217	R 1/4 Swivel Ends	24 ft / 295 in	8	12
HA5219	R 1/4 Swivel Ends	32 ft / 393 in	8	12
HA5221	R 3/8 Swivel Ends	32 ft / 393 in	10	15
Colour: Yellow				
TT-14-10-Y-RS	R 1/4 Swivel Ends	9.8 ft / 118 in	6.35	9.5
Colour: Black				
TT-14-30-BK-SS	R 1/4 Swivel Ends	19 ft / 353 in	6.35	9.5
TT-14-50-BK-SS	R 1/4 Swivel Ends	29 ft / 590 in	6.35	9.5

- Working pressure: 14 bar / 200 psi

- Working Pressure of HA5220 / HA5221 / TT-14-10-Y-RS / TT-14-30-BK-SS / TT-14-50-BK-SS: 10 bar / 150 psi

Features

- Polyurethane (PU) material
- Nickel plated 360° swivel fittings
- 200 mm straight ends with spring guard



NYLON COILED AIR HOSE ASSEMBLIES

PCL's Nylon Coiled Air Hose Assemblies are manufactured from top quality nylon resin with nickel-plated 360° swivel fittings. This compact lightweight hose is ideal for workshops where normal tubing may be a trip hazard.

Features

- 200 mm straight ends with spring guard
- Nickel plated 360° swivel ends
- Nylon material

Part Number	Fittings	Hose Length	Inside Diameter (mm)	Outside Diameter (mm)	Colour
HA5201	R 1/4 Swivel Ends	25 ft / 299 in	6	8	Red

- Working pressure: 14 bar / 200 psi



Expertise in design and innovation has seen PCL establish itself as the brand to use in the most testing of tire inflation and pneumatic applications.

As the worldwide market leader in equipment for tire checking and inflation, PCL is a common sight in workshops and tire shops, aircraft service centres and forecourts.

PCL offers the highest quality, most reliable and cost-effective equipment for fast and accurate tire inflation, ranging from handheld analogue units, to the high-tech ACCURA electronic range - meeting user needs whatever the application or personal preference.

Explore our latest range of tire inflation equipment.

See pages 4 - 25



BLOWGUNS

HOW TO SELECT THE RIGHT BLOWGUN

Should I choose plastic or metal?

This is down to personal preference.

PCL's latest range of blowguns, ERGO and ERGO EXTREME, is manufactured from highly durable Zytel Nylon, which provides heat and chemical resistance but is lighter in weight than metal products and feels warmer in the hand. Nozzles are usually metal, with internal components made from brass and stainless steel, adding to the increased durability and longevity.

PCL's entry level range is also manufactured from plastic. These blowguns do not have the same high levels of durability, however they do represent excellent value for money.

Where longer life is a priority over comfort, metal blowguns are a good option. PCL offers die-cast alloy products in two styles – pistol or palm – both of which are compact and robust.

Pressure required

This depends upon the maximum pressure relevant to your Health & Safety air supply and working practices. There is no specific UK legislation relating to this, however OSHA states that industrial safety air blowguns should be used for industrial applications.

Why use safety blowguns?

PCL's safety blowguns feature a cleverly designed safety valve that reduces the output of air to 2 bar and slowly releases air if there is a blockage, reducing the risk of injury. They are designed to ensure noise levels do not exceed 90dB, as continuous, repeated exposure to anything above that poses a significant risk of partial or permanent hearing loss.

Type of nozzle

PCL offers a range of nozzles from the standard conical nozzle to safety nozzles. For industrial applications, conical nozzles should only be used with a blowgun that has a tamper-proof 2 bar valve.

Safety nozzles are available in two types – Aircurtain and Reduced Jet-velocity – and are selected according to the size and shape of the object the air stream is aimed at, as this will dictate whether you need a flat or concentrated pattern of air.

SAFETY NOZZLES



Aircurtain Nozzles
(Flat)



Reduced Jet-velocity Nozzles
(Concentrated)

BLOWGUN SAFETY TIPS



It is a company's duty to ensure the health and safety of its employees, and this includes providing safe equipment that the user is trained to use and ensuring they are aware of associated risks and precautions.

Tips for using air blowguns safely:

- Choose a safety blowgun with a safety valve
- For blowguns without a built-in safety mechanism, reduce pressure to 2 bar or 30 psi gauge pressure
- Always wear eye and ear protection
- Use a blowgun with noise levels below 90dB that meets OSHA standards
- Ensure the end of the blowgun is never blocked
- Never point a blowgun towards yourself or anyone else. Compressed air can enter the bloodstream by getting underneath the skin which can cause an embolism
- Do not use a blowgun as a vacuum or to clean clothing, particularly when clothing is worn



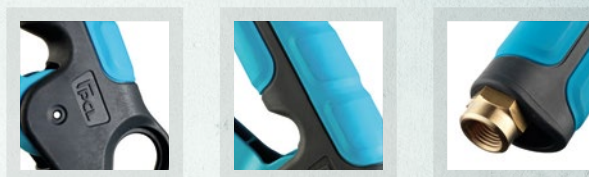
BLOWGUNS

INTRODUCING PCL'S NEW ERGO EXTREME BLOWGUN RANGE

Design-engineered in the UK, with comfort and style in mind, this premium range of blowguns has the PCL DNA running right through it, from handle to tip. This sturdy product, made from durable Zytel Nylon, looks and feels good in the hand, and features a flexible, rubber grip for additional cushioning and increased strength. A newly designed air release valve is built into the body to enable the trigger/air flow to be feathered. Available in 7 options including 2 bar regulated blowguns and safety nozzles.

Features

- Flexible, rubber grip on the handle for additional cushioning and strength
- Re-enforced webbing and robust design for strength and confidence
- Newly designed air release valve built into the body
- Easy storage with multiple hanging points, creating additional space and strength in the handle area
- Rp 1/4 female brass inlet for increased durability



STANDARD ERGO EXTREME BLOWGUNS

Part Number	Air Flow	Sound	Nozzle
BG7501	11.8 cfm / 334 l/min	94 dBA	Standard
BG7502	11.8 cfm / 334 l/min	94 dBA	Extended

Air Inlet: Rp 1/4
Working pressure: 145 psi / 10 bar

ALSO AVAILABLE » PCLK7501 - 13 PIECE BG7501 COUNTERTOP DISPLAY PACK

SAFETY BLOWGUNS & NOZZLES

2 BAR AUTO SAFETY ERGO EXTREME BLOWGUNS

PCL's 2 Bar Auto Safety Blowguns are equipped with an automatic pressure reduction which ensures the air inlet will automatically be reduced to the recommended 2 bar. This virtually eliminates user error, ensuring safety.

Part Number	Air Flow	Sound	Nozzle
BG8501	8.9 cfm / 252 l/min	90 dBA	Standard
BG8502	8.9 cfm / 252 l/min	90 dBA	Extended

LOW NOISE ERGO EXTREME BLOWGUN

PCL's Low Noise Safety Blowgun is designed to reduce the risk associated with noise exposure. Its innovative nozzle design ensures that the airflow continues through the sides of the pipe if the tip becomes blocked.

Part Number	Air Flow	Sound	Nozzle
BG7506	9.8 cfm / 277 l/min	80 dBA	Low Noise

TURBO ERGO EXTREME BLOWGUN

PCL's TURBO Nozzle Safety Blowgun is ideal when increased airflow is required, enabling additional air to be absorbed safely through the sides.

Part Number	Air Flow	Sound	Nozzle
BG7508	18.4 cfm / 521 l/min	114 dBA	Turbo

AIRCURTAIN ERGO EXTREME BLOWGUN

Recommended for use in large areas, PCL's Aircurtain Blowgun with increased air flow meets OSHA requirements for noise and safety. Its flat nozzle ensures air flow is spread out, making the blowgun impossible to block and providing an extremely high blowing force.

Part Number	Air Flow	Sound	Nozzle
BG7505	8.8 cfm / 249 l/min	94 dBA	Aircurtain



Low Noise Nozzle

Designed to reduce the risk associated with noise exposure.



TURBO Nozzle

Ideal when increased airflow is required.



Aircurtain Nozzle

Ideal when a larger dispersal of air is required.



BLOWGUNS

STANDARD SAFETY NOZZLE BLOWGUN

Manufactured from chemical and impact resistant acetal resin, PCL's entry level Rp 1/4 pistol grip Plastic Blowgun is suitable for use with both air and water. It features an innovative safety nozzle design which ensures the airflow cannot be blocked.

Features

- Ergonomically designed handle, for comfort in use
- Innovative nozzle design ensures that the airflow cannot be blocked
- Valve allows trigger-adjustable airflow
- Brass thread inlet for increased durability
- Maximum supply pressure: 10 bar / 140 psi



Part Number	Air Flow	Nozzle Style
BG5004	270 l/min / 9.3 cfm	Safety

PISTOL GRIP BLOWGUN

This Rp 1/4 Pistol Grip Blowgun is manufactured from high quality die-cast alloy, giving the tool a long trouble-free life.

Features

- Robust and compact design
- Extensive, easy to fit with additional nozzle range
- Supplied with a conical and safety nozzle
- Maximum supply pressure: 10 bar / 140 psi



Part Number	Air Flow	Nozzle Style
BG405	320 l/min / 11.2 cfm	Conical & Safety

AIRVAC

The PCL AirVac is a useful addition to any toolbox. With vacuum and blow functions and numerous attachments, it will keep your workspace clean and free of debris.

Features

- Neat slimline design
- Handy dust bag and extension tube
- Includes 3 different nozzle attachments and 1 extension nozzle



Part Number	Air Consumption
AV301	3.6 cfm / 100 l/min

BLOWGUN NOZZLES

PCL's comprehensive range of threaded (1/8 in inlet), easy to fit nozzles are interchangeable and cater for all blowgun applications.

Part Number	Nozzle Style
BGN4088	Conical
BGN461	Safety
BGN466	9" Extension



PLASTIC BLOWGUN

Manufactured from chemical and impact resistant acetal resin, this range of entry level Rp 1/4 pistol grip Plastic Blowguns is suitable for use with both air and water.

Features

- Ergonomically designed handle, for comfort in use
- Valve allows trigger-adjustable airflow
- 9" extension nozzle can be further cut and bent to suit users application
- Maximum supply pressure: 10 bar / 140 psi



Part Number	Air Flow	Nozzle Style
BG5002	270 l/min / 9.3 cfm	Standard
BG5007	270 l/min / 9.3 cfm	Extended

PALM BLOWGUNS

This robust blowgun with Rp 1/4 air inlet is manufactured from high quality die-cast alloy for a long, trouble-free life.

Features

- Robust and compact design
- Extensive, easy to fit with additional nozzle range
- Display packed for convenience
- Maximum supply pressure: 14 bar / 200 psi



Part Number	Air Flow	Nozzle Style
BG105	148 l/min / 5.3 cfm	Conical
BG106	148 l/min / 5.3 cfm	Safety

ECONOMY PALM BLOWGUN

The robust Palm Blowgun with Rp 1/4 air inlet is manufactured from high quality die-cast alloy, giving the tool a long trouble free life.

Features

- Robust and compact design
- Supplied with a conical and safety nozzle
- Display packed for convenience
- Maximum supply pressure: 10 bar / 140 psi



Part Number	Air Flow	Nozzle Style
BG605	240 l/min / 8.9 cfm	Conical & Safety



HOSE REELS

HOSE REEL RANGE

3 sizes to suit user needs

Specifically designed for use with compressed air in garages, workshops and industrial applications, PCL's hose reel range comes in three sizes, with different hose lengths and diameters to suit user needs.

Each features a hose stop that stops in any position and is adjustable at the flick of a lever. All except the bench top hose reel are slow retract, taking up to 9 seconds.

Easy to maintain, cleaning brushes are now included as standard to avoid debris being taken back into the reel, which can cause the layering system to fail.

Features

- Easy to use adjustable hose stopper - Reduces non-value-added time
- Auto retract - Easily and smoothly rewinds the hose
- Supplied with cleaning
- High impact polypropylene construction for maximum durability
- Copper tail coupling with dust cap
- Steel wall mounting 180°

Hose: PVC or Rubber/PVC Blend - Case type: Polypropylene

BENCH TOP HOSE REELS

The compact and hard-wearing Bench Top Hose Reel is perfect for confined environments where space is a major factor and robustness and reliability is essential. The new reels have a 1/4" BSPT connection and a working pressure upto 120 psi / 8 bar.



Part Number Hose Length Hose I.D. Inlet & Outlet Size Hose Type

Bench Top Hose Reels

Part Number	Hose Length	Hose I.D.	Inlet & Outlet Size	Hose Type
HRA2X	26 ft / 314 in	8 mm	1/4" BSPT	PVC

Working pressure: 120 psi / 8 bar



WORKSHOP PRO HOSE REELS

Designed with safety in mind, PCL's medium-sized Workshop Pro Hose Reels with 1/4" BSPT connection feature a slow retracting mechanism that prevents accidental loss of hose control during retraction, reducing the risk of injury or damage. The range also offers a bright hi-vis hose option for extra safety around garages and workshops.



Part Number Hose Length Hose I.D. Inlet & Outlet Size Hose Type

Workshop Hose Reels

Part Number	Hose Length	Hose I.D.	Inlet & Outlet Size	Hose Type
HRA3L02	49 ft / 590 in	10 mm	1/4" BSPT	PVC
HRA3L03	65 ft / 787 in	10 mm	1/4" BSPT	Rubber & PVC Blend
HRA3L02/HV	49 ft / 590 in	10 mm	1/4" BSPT	Hi-Vis Rubber & PVC Blended

Working pressure: 250 psi / 17 bar

WORKSHOP PRESTIGE HOSE REELS

PCL's Workshop Prestige Hose Reels are the largest reels of the new range with a 1/2" BSPT connection. The reels feature a slow retracting mechanism which prevents accidental loss of hose control during retraction, reducing the risk of injury or damage.



Part Number Hose Length Hose I.D. Inlet & Outlet Size Hose Type

Part Number	Hose Length	Hose I.D.	Inlet & Outlet Size	Hose Type
HRA3M01	49 ft / 590 in	12 mm	1/2" BSPT	PVC
HRA3M02	59 ft / 708 in	12 mm	1/2" BSPT	Rubber & PVC Blend

Working pressure: 250 psi / 17 bar



DROPOUT® AIR TREATMENT

Dropout® offers an extremely high performance all-in-one solution. Its unique patent design allows the unit to efficiently remove liquid water, oil and other contaminants down to 1 micron at a wide range of flow rates without mains power or costly replacement filter elements.

Recommended for use where there is a high concentration of water in the air supply, Dropout® units are frequently used in paint and refinish environments as an alternative to dryers, where moisture-free air is essential.

Features

- Guaranteed 99.9999% liquid (water & oil) and 99% solid particulate removal
- Particulate removal to 1 micron
- Low maintenance and cost of ownership
- No increase in pressure drop caused by blocked filters
- Instantaneous recovery from pulsed flows or stop start

CONFORMS TO » ATEX MARK EX II 2G IIC T6 GB



DROPOUT® WATER SEPARATOR

The unique, patent protected 3/4" Dropout® Water Separator is sealed for life in aluminium housing. The unit comes complete with a wall bracket and drain valve for manual drainage.

Part Number	Port Size (in)	Maximum Inlet Pressure	Maximum Flow Rate
PDO600A	3/4 BSPT	16 bar / 232 psi	1000 l/min / 35.3 cfm



DROPOUT® WATER SEPARATOR WITH BUILT-IN AUTO-DRAIN

Exceptional compressed air quality is guaranteed with this 1/2" Compact Dropout® unit, which is used as an in-line point of use liquid water separator and contaminant remover.

The unique multi-stage compressed air filter features a built-in auto drain, and once fitted is maintenance free.

Part Number	Port Size (in)	Maximum Inlet Pressure	Maximum Flow Rate
PDO300PA	1/2 BSPT	16 bar / 232 psi	283 l/min / 11 cfm



DROPOUT® WATER SEPARATOR - STAINLESS STEEL

The sealed for life Stainless Steel Grade 304 Dropout® Water Separator is available in a range of port sizes and flow rates. Comes complete with a wall bracket and drain valve for manual drainage.

Part Number	Port Size (in)	Maximum Inlet Pressure	Maximum Flow Rate
PDO60S	1/4 BSPT	15 bar / 217 psi	90 l/min / 3.2 cfm
PDO300S	1/2 BSPT	15 bar / 217 psi	450 l/min / 15.9 cfm
PDO600S	3/4 BSPT	15 bar / 217 psi	900 l/min / 31.8 cfm
PDO900S	3/4 BSPT	15 bar / 217 psi	1350 l/min / 47.7 cfm
PDO1500S	1 BSPT	15 bar / 217 psi	2314 l/min / 81.7 cfm
PDO2000S	1 BSPT	15 bar / 217 psi	3085 l/min / 108.9 cfm



DROPOUT® AUTO-DRAIN

The Dropout® Auto-drain is designed to remove all contaminants from the Dropout units automatically. Two 1/2" inlet connections enable flexible installation. It comes supplied with a metal blanking plug to block any unused port.

Features

- Drains all contaminants (liquid water & oil and solid particles)
- No mains power
- Automatic and manual drain options
- Easy to install
- Maintenance free

Part Number	Inlet Connection (in)	Outlet Connection (in)	Water Storage
PDOAD128	1/2 BSPT	1/8 in BSPT	350 cc





AIR TREATMENT

Our FRL range includes combination units with 1/4" and 1/2" inlet ports. Adding a PCL Air Treatment unit into an air line efficiently filters to 10 microns. Products feature polycarbonate bowls, allowing the user to easily monitor the element's condition and the collected liquid's level. The bowl is surrounded with protective metal as a safety measure to protect the user in case of excessive pressures, temperatures, or aggressive chemicals.

Features

- Selectable manual/semi-automatic drain
- Polycarbonate bowl
- Locking device
- 10 micron filter
- Complete with wall bracket and pressure gauge



FILTER-REGULATOR & LUBRICATOR

PCL's FRL Units are designed to control output air pressure, eliminate moisture and contaminants from the air flow, and to lubricate tools during use.

Part Number	Port Size (in)	Adjustment	Maximum Inlet Pressure	Flow @ 6 bar
ATCFRL6	1/4	0-10 bar / 145 psi	12 bar	1,800 l/min
ATCFRL12	1/2	0-12 bar / 170 psi	16 bar	5,000 l/min



FILTER-REGULATOR

PCL's Filter-Regulator units are designed to eliminate moisture and particulates from the air flow.

Part Number	Port Size (in)	Adjustment	Maximum Inlet Pressure	Flow @ 6 bar
ATC6	1/4	0-10 bar / 145 psi	12 bar	1,800 l/min
ATC12	1/2	0-12 bar / 170 psi	16 bar	5,000 l/min



FILTER

PCL's Filters are used to clean and dry compressed air.

Part Number	Port Size (in)	Capacity of drain bowl	Maximum Inlet Pressure	Flow @ 6 bar
ATF6	1/4	30 ml	12 bar	2,100 l/min
ATF12	1/2	50 ml	16 bar	6,000 l/min



LUBRICATOR

PCL's Lubricator is fitted with adjustable lubrication output.

Part Number	Port Size (in)	Cup size	Maximum Inlet Pressure	Flow @ 6 bar
ATL6	1/4	40 ml	12 bar	2,200 l/min
ATL12	1/2	70 ml	16 bar	6,000 l/min



REGULATOR

PCL's Regulators are used to reduce compressed air pressure.

Part Number	Port Size (in)	Adjustment	Maximum Inlet Pressure	Flow @ 6 bar
ATR6	1/4	0-10 bar / 145 psi	12 bar	1,700 l/min
ATR12	1/2	0-12 bar / 170 psi	16 bar	6,000 l/min



ALSO AVAILABLE » ATF6AD - 1/4" FILTER WITH AUTO DRAIN

PRESSURE GAUGES

These rear entry pressure gauges are calibrated in psi and bar for use with 1/4" and 1/2" Regulator units.

Part Number	Port Size	Calibration
ATG4	R 1/8	0-11 bar / 0-160 psi
ATG8	R 1/4	0-11 bar / 0-160 psi



Explore the full range on the PCL website



ECONOMY AIR TREATMENT

ECONOMY AIR TREATMENT

For budget applications, PCL's Economy Air Treatment range of FRLs provides a ready constructed "connect and go" air treatment system which filters to 40 microns and has 1/2" port inlets.

Features

- Semi-automatic drain valve
- Polycarbonate bowls
- 40 micron filter

Part Number	Description	Port Size (in)	Adjustment	Maximum Inlet Pressure
AFR1	Filter-Regulator	1/2	0-10 bar / 0-150 psi	10 bar
AFRLC1	Filter-Regulator & Lubricator	1/2	0-10 bar / 0-150 psi	10 bar



IN-LINE AIR TREATMENT

IN-LINE FILTER

The In-line Filter is used in addition to existing air treatment in your system and provides any extra filtration for specific applications or tools.

Features

- Temperature range: -10°C to 50°C
- Transparent polycarbonate housing
- 10 micron filter

Part Number	Port Size (in)	Maximum Inlet Pressure	Flow Rate @ 6 bar
INF6	1/4	12 bar	2,100 l/min



IN-LINE LUBRICATOR

The In-line Lubricator is used in addition to existing air treatment in your system and provides any extra filtration required for specific applications or tools.

Features

- Temperature range: -10°C to 50°C
- Transparent polycarbonate housing
- 10ml cup capacity

Part Number	Port Size (in)	Maximum Inlet Pressure	Flow Rate @ 6 bar
INL6	1/4	12 bar	2,700 l/min



COMPRESSORS

COMPRESSOR TIPS



- **Avoid using extension leads** with an air compressor, the voltage drop can cause the motor to overheat which will eventually lead to the compressor motor burning out. We recommend using a longer air hose instead.
- If you do plan to run your air tool some distance away from the actual compressor, you must **take into consideration that air flow lost through hoses and fittings will result in pressure drops**. However, the more CFM the compressor produces, the better your tool will run, even with longer hoses and more fittings.

- **Remember to oil your air compressor regularly** so it performs correctly. (You do not need to do this with oil-less compressors).
- **Compressors should be drained frequently** to prevent water from reducing performance. They often fill with water due to moisture content in the air, therefore the compressor has a drain screw located at the lowest part of the receiver to release it.



The TECALEMIT brand is well-known on the global market as a pioneer in lubrication solutions and fuel dispensing technology, mainly for diesel fuel, oil, grease, lubricants and AdBlue®.

With over a 100 years' experience of manufacturing premium, cost-effective equipment that is rugged, reliable and easy to use, TECALEMIT is proud of its "Made in Germany" heritage.

The TECALEMIT portfolio includes pumps, fluid handling and dispensing products, along with other associated workshop equipment.

High-pressure Two Handed Lever-type Grease Gun

This two-headed industrial, grease gun is stable, robust, reliable and easy to operate. It features a 4 jaw hydraulic connector for lubrication procedures conducted on high- quality machines with long lubrication lines. The light-weight design with ergonomic handles and nozzle holder, ensures precision and cleanliness.

- Extreme ease of operation and reliable lubrication
- 300 mm high pressure hose
- 4 jaw hydraulic connector
- Holds 500 g screw-on cartridges

PART #	DESCRIPTION
011 681 051	High Pressure Two-handed Lever Type Grease Gun

- Pressure capacity: Max. 400 bar
- Delivery rate / stroke: up to 2 cm³
- Connection thread: M 10 x 1 IG



Lever-operated Grease Guns

These compact and robust industrial grease guns feature a lever handle mechanism and vinyl cover, providing a comfortable grip, whilst an extension pipe helps the user to reach tight areas. Available with a 150mm nozzle tube or 300mm high pressure hose, guns come with a 4-jaw hydraulic connector.

- Lever handle grip
- 4 jaw hydraulic connector
- Holds 400 g cartridge / 500 cm³ content

- Pressure capacity: Max. 400 bar
- Delivery rate / stroke: up to 2 cm³
- Connection thread: M 10 x 1 IG

PART #	DESCRIPTION	
011 681 021	Lever Type Grease Gun	150mm
011 681 031	Lever Type Grease Gun	300mm
011 681 041	One-handed Lever Type Grease Gun	150mm



Tankquick ECO

The Tankquick Eco is a fuel suction unit with changeable container and level indicator suitable for a wide range of applications, including extracting fuel from vehicle tanks in workshops, the drainage of vehicles in car dealerships and removing fuel at petrol forecourts where the incorrect fuel has been used.

ATEX approved, complying with vigorous safety requirements for explosive areas, Tankquick Eco is fitted with a pneumatic extraction and refilling unit with practical single hose and vapor recovery system.



- Electrically conductive hose and transport system
- Potential equalization
- Vapor recovery system
- Overfill indicator
- 4 casters with parking brake

Part Number	Effective Capacity	Suction Hose	Delivery Rate
013 896 200	110 litre	15 x 9 mm	7.5 l/min



LUBE/OIL PUMP BUNDLES

PK3HD & PK5HD PUMPS, HOSE REEL, & NOZZLE
EQUIPMENT COMPONENTS TO COMPLETE YOUR OIL PACKAGES

The lube/oil pump bundle from TECALEMIT includes your choice of either a 3:1 or 5:1 pump, a hose reel, and a digital metered nozzle. This bundle is an ideal solution to accompany your lube/oil tanks you might already have onsite. Save time during your purchasing process by going with a solution that provides some of the key components of a lube/oil tank package within a single bundle.

Experience the performance and reliability you expect from TECALEMIT's product portfolio. Packaged with value and options to give you the most flexibility, the lube/oil pump bundle will get you where you want to go.

PK3HD PUMP OPTION

TECHNICAL SPECIFICATIONS & FEATURES



Lower pump material:	Carbon steel
Air inlet pressure:	30-150 psi
Fluid pressure:	450 psi
Flow rate:	5.28 gpm
Air inlet size:	1/4" NPT (F)
Fluid outlet size:	1/2" (M)
3:1 PART #	17040350

HOSE REEL

TECHNICAL SPECIFICATIONS & FEATURES



Hose length:	50 ft.
Hose size:	1/2"
Working pressure:	2320 psi/160 bar
Hose material:	S.A.E. 100R1 wire braid
Weight:	64.8 lbs.
PART #	M860154

PK5HD PUMP OPTION

TECHNICAL SPECIFICATIONS & FEATURES



Lower pump material:	Carbon steel
Air inlet pressure:	30-150 psi
Fluid pressure:	750 psi
Flow rate:	4 gpm
Air inlet size:	1/4" NPT (F)
Fluid outlet size:	1/2" (M)
5:1 PART #	17040550

DIGITAL METERED NOZZLE

TECHNICAL SPECIFICATIONS & FEATURES



Inlet connection:	1/2"
Pressure range:	7-725 psi
Temperature:	14°F to 140°F
Accuracy:	+/- 0.5%
Rigid tube Manual tip Digital meter	

DIGITAL METERED NOZZLE

TECHNICAL SPECIFICATIONS & FEATURES



Inlet connection:	1/2"
Pressure range:	7-1000 psi
Temperature:	14°F to 140°F
Accuracy:	+/- 0.5%
Rigid tube Manual tip Digital meter	

PART #

DESCRIPTION

18163521	1/2" Digital Metered Nozzle (No Presets)
----------	--

PART #

DESCRIPTION

1833513	1/2" Digital Metered Nozzle (With Preset)
---------	---



HAND PUMPS FOR OIL/DEF

DRUM & TOTE APPLICATIONS

QUALITY HAND PUMPS DESIGNED FOR SMALLER APPLICATIONS

POLY DEF PISTON PUMP

TECHNICAL SPECIFICATIONS & FEATURES

Single action hand pump for DEF | Pump & downtube only

Dimensions (W x D x H): 18.5" x 18.5" x 12" (box)

Weight: 6.5 lbs



- DEF
- Water
- Washer Fluid

PART #	DESCRIPTION
USDLP-500	POLY DEF HAND PUMP
USDLPPRO-500	POLY DEF HAND PUMP W/ HOSE & NOZZLE
USDLPRO-610 MM	POLY DEF HAND PUMP W/ HOSE, NOZZLE & POLY COUPLER

K10C HAND PUMP

TECHNICAL SPECIFICATIONS & FEATURES

Used with diesel fuel, light oils, & radiator antifreeze

Approved for explosion risk areas

Built for long-term durability

Dimensions (W x D x H): 4.3" x 3.95" x 7.7"



- Diesel
- Coolant
- Lube Oil

PART #	DESCRIPTION
US103089100	K10C HAND PUMP KIT

OK9 BS HAND PUMP

TECHNICAL SPECIFICATIONS & FEATURES

Used with engine oils & hydraulic oil up to SAE 80

Single action heavy duty pump with non-drip outlet

Dimensions (W x D x H): 8.6" x 4.7" x 15"



- Lube Oil

PART #	DESCRIPTION
US122029100	OK9 BS HAND PUMP KIT



OIL MANAGEMENT SYSTEM

Keep an eye on level and inventory control and switch to the new wireless TECALEMIT oil management system "TMS smart". Optimize your inventory control, maximize your profit and benefit from complete control with maximum flexibility and reliability.

As a standalone system or connected to an existing dealer management system (DMS) - the TMS smart family, combined with our myTecalemit fill level monitoring, offers you the most modern oil inventory monitoring and dispensing system currently available on the market.

Your advantages at a glance:

- One system for mobile and stationary application
- Simple installation
- Fast and easy operation
- Precise measurement and dispensing
- Full control via "TMS smart Control" software
- Fast payback with price advantage over conventional systems
- Can be easily integrated into existing systems

TECHNICAL SPECIFICATIONS & FEATURES

Viscosity range	20 - 2000 mPa s
Smallest volume flow Q min	0.2 gpm
Largest volume flow Q max	+/- 2.5 gpm
Max. Operating pressure p	70 bar
Threaded connection	G 1/2" internal
Measuring accuracy	+/- 1% (+/-0.5% following calibration)
Weight	3.7 Lbs
IP protection	IP54
Permitted operating temperature	14°F to +131°F
Permitted storage temperature	-4°F to +158°F
Authorised liquids	Engine oil, gear oil, hydraulic oil, radiator antifreeze, diesel, heating oil

PART NUMBER	DESCRIPTION
30492110	TMS SMART METER
30492110	TMS SMART REPEATER
30491000	TMS SMART GATEWAY



SMART METER





IMPACT SOCKETS

WHY IT IS VITAL TO ONLY USE IMPACT SOCKETS ON AIR TOOLS

Using impact sockets helps to achieve optimal tool efficiency but most importantly, ensures safety in the workspace.

They are specifically designed to withstand the vibration and shock of each impact, preventing cracks or breaks, thereby prolonging the life of the socket and avoiding damage to the tool's anvil.

Impact sockets can be used safely on a hand tool, however you should never use a regular socket on an impact wrench as this can be extremely dangerous. A regular socket is likely to shatter when used on power tools due to their thinner wall design and the material they're made from. This could be a serious safety risk for everyone using the same workspace as cracks in the socket could cause it to rupture at any time causing severe injuries.

3 PIECE 1/2" DRIVE ALLOY WHEEL IMPACT SOCKET SET

BEST SELLER

This high quality 3 Piece 1/2" Drive Alloy Wheel Impact Socket Set is made from high grade hardened chrome molybdenum steel for longer life, with sockets encased in a protective plastic sleeve to prevent damage to alloy wheels. The set includes the 3 most popular sizes of impact sockets for a 1/2" drive impact wrench.

Features

- Impact rated 6 point chrome molybdenum sockets for longer life
- Features two grease rings for superior user grip
- Centre hole is punched through for extra depth on the work surface
- Offers Z-Drive, contacting the flat walls of fasteners for stronger grip
- Thin wall design with chamfered openings for easier mating to fasteners

Part Number Kit Contents

APA12 x3 Sockets - sizes included (mm): 17, 19 & 21



18 PIECE 1/2" DRIVE IMPACT SOCKET SET

Features

- Impact rated 6 point chrome molybdenum sockets for longer life
- All PCL sockets exceed ANSI specifications
- Features two grease rings for superior user grip
- Centre hole is punched through for extra depth on the work surface
- Offers Z-Drive, contacting the flat walls of fasteners for stronger grip

Part Number Kit Contents

APA10 x1 1/2" Extension bar
x17 Sockets - sizes included (mm): 10, 11, 12, 13, 14, 15, 16, 17, 18, 19, 21, 22, 23, 24, 27, 30, 32



10 PIECE 1/2" DRIVE DEEP IMPACT SOCKET SET

Features

- Impact rated 6 point chrome molybdenum sockets
- All PCL sockets exceed ANSI specifications
- Features two grease rings for superior user grip
- Centre hole is punched through for extra depth on the work surface
- Offers Z-Drive, contacting the flat walls of fasteners for stronger grip

Part Number Kit Contents

APA11 x10 Sockets - sizes included (mm): 10, 11, 12, 13, 14, 17, 19, 21, 22 & 24

Explore the full range on the PCL website



The PCL heritage

PCL was founded in 1938 when the company designed and manufactured tyre pressure gauges in Sheffield. Over the 85 years since, PCL has been designing and manufacturing advanced compressed air products and tire inflation equipment; creating innovative solutions to meet customer needs in this ever-changing world and providing support through global challenges such as the pandemic.

PCL's expertise in developing high quality products backed by first class customer service has seen PCL experience phenomenal growth, with the company joining the HORNGROUP of companies, along with the TECALEMIT brand, in 2011.

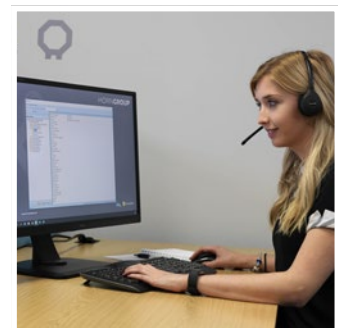
Today PCL exports to over 100 countries through a worldwide network of agents and distributors, with manufacturing facilities in England, Germany, USA, India and China; whilst remaining firmly committed to its roots, operating from its state-of-the-art production facility and HQ in Sheffield.

The trusted "Made in Sheffield" PCL brand has become synonymous with superior products, superb aftersales care and local technical support, wherever its customers are based.

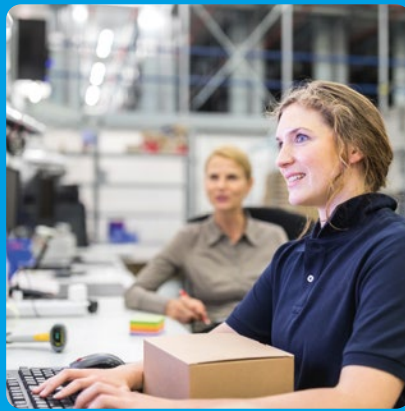
PCL has recently reinforced its roots and commitment to UK manufacturing with a £0.5 million investment into a restructure of its Sheffield factory. This includes the purchase of more equipment and machinery to increase capacity and shift to manufacturing more components in-house.

PCL is proud to be one of the best examples of a manufacturing company in Sheffield and Yorkshire, with customer needs a priority in all areas of its operations.

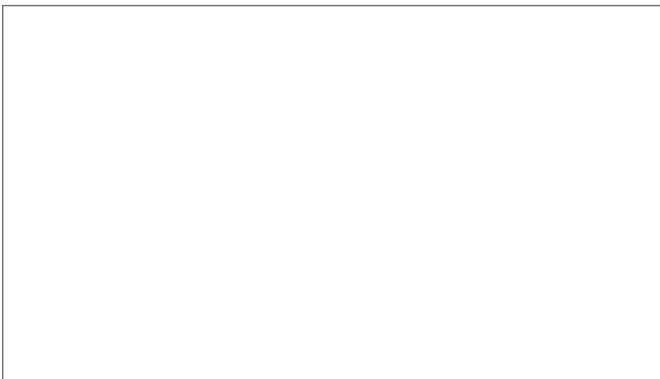
We continue to work in close partnership with our customers and suppliers to help their businesses grow alongside ours.



PCL's global network of distributors provides customers with first-class local service



Contact your local PCL distributor



All orders are subject to our standard terms & conditions - available on request. All product specifications are subject to change without notice. Published October 2025. E. & O.E. Version 1.

PCL USA

6324 Greens Road
Humble, TX 77396

T (281) 446-7300
sales@pcltireinflationusa.com
www.pcltireinflationusa.com



A HORNGROUP BRAND