

FLOWPIPE

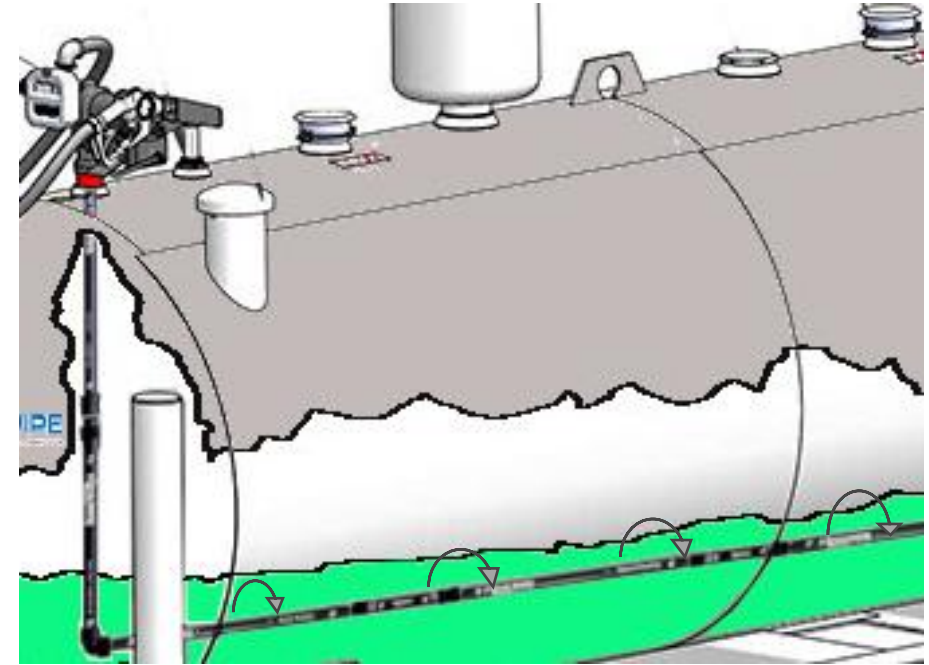
FUEL IN MOTION

Standard sizes are 500 gallons, 1000 gallons and 2000 gallons.
1" diameter HDPE FLOWPIPE

2000 gallons FLOWPIPE .
64" Vertical in Height
110" Horizontal in Length

1000 gallons FLOWPIPE.
48" Vertical in Height.
110" Horizontal in Length

500 gallons FLOWPIPE
48" Vertical in Height.
54" Horizontal in Length



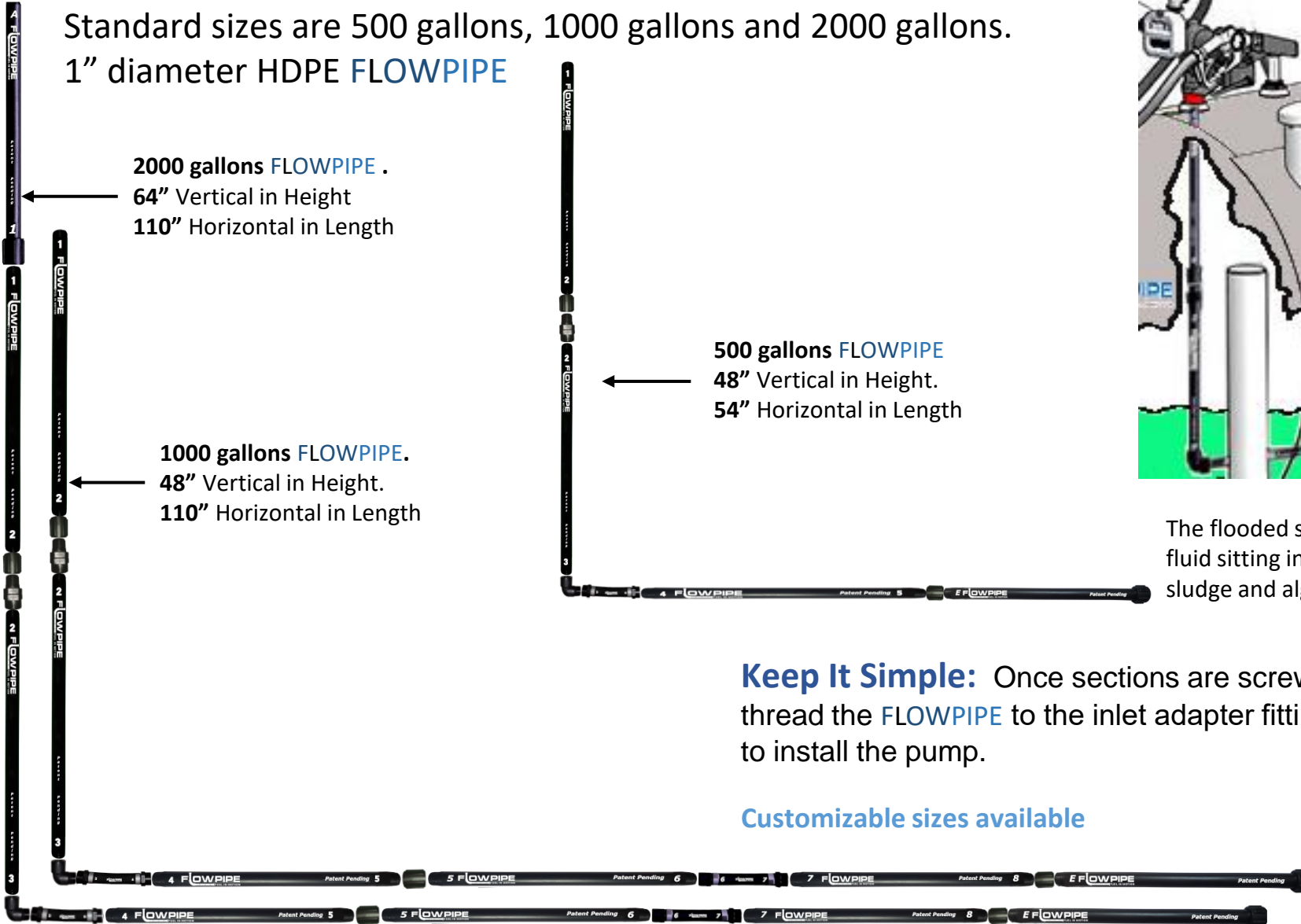
The flooded suction allows for the FLOWPIPE to remove 99% of all fluid sitting inside of your tanks. In turn this will minimize your sludge and algae build up inside of your tank.

Keep It Simple: Once sections are screwed together, simply thread the FLOWPIPE to the inlet adapter fitting that you'll be using to install the pump.

Customizable sizes available

Call: 919-600-4646

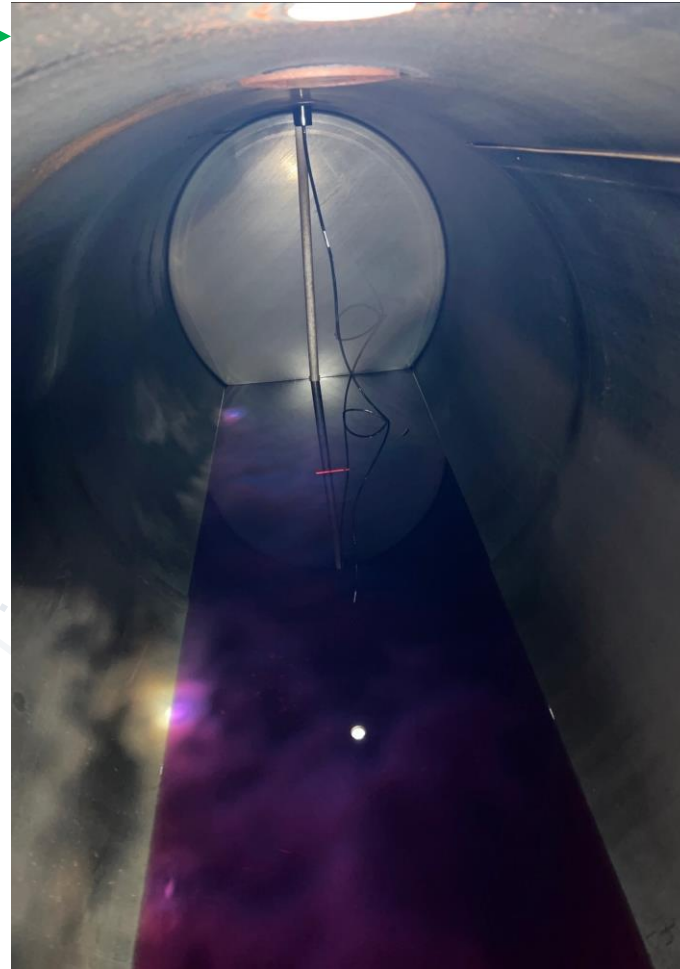
www.theflowpipe.com



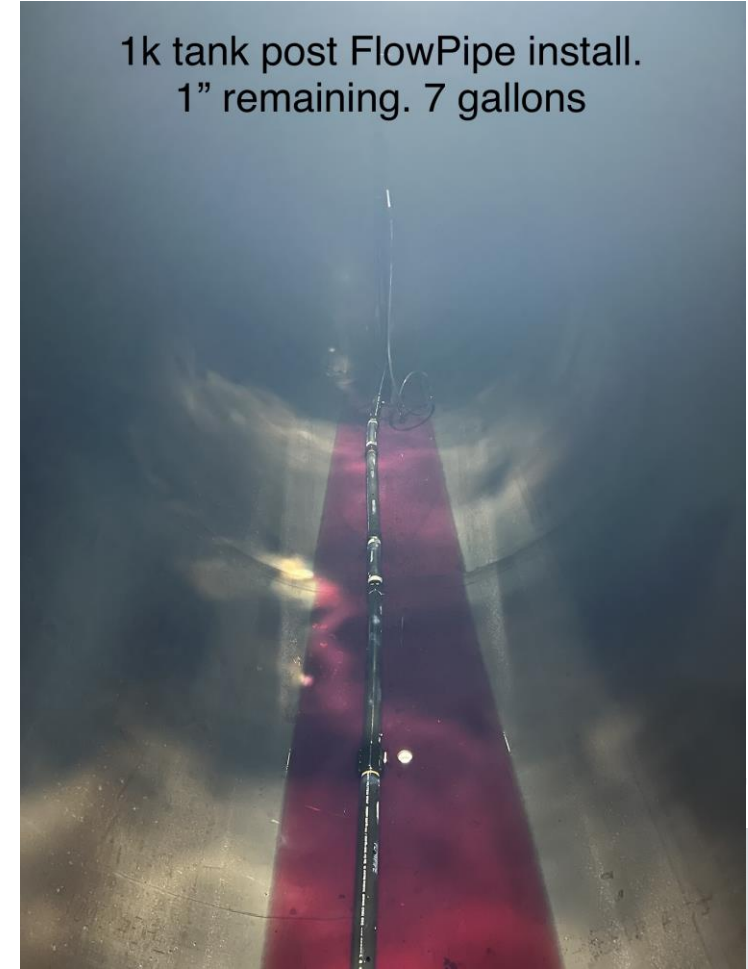
Without Flow Pipe →

1K tank 80 Gallons remain

Standard tank after 1 year.



1k tank post FlowPipe install.
1" remaining. 7 gallons



- Maximize product turnover by accessing 99% of the product within.
- Reduce labor by increasing the average delivered quantity.
- Decrease costly cleanings for the life of the tank.